
Answer Collection

1600 Series

Plan 1652



Elevation Aw



Elevation Ab



Elevation Bw



Elevation Bb



Elevation Cw



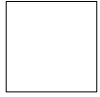
Elevation Cb

In the interest of continual improvement, Vintage Homes LLC reserves the right to make changes without notice or obligation. Prices are subject to change until a sales contract is accepted by Vintage Homes, LLC. Illustrations and specifications are correct at the time of publication, and are not to create any warranty or contract rights. All dimensions are approximate. Details shown may vary depending on the elevation and lifestyle choices selected. Please consult your Vintage New Home Consultant for details. **Effective Date: 7/29/2011**

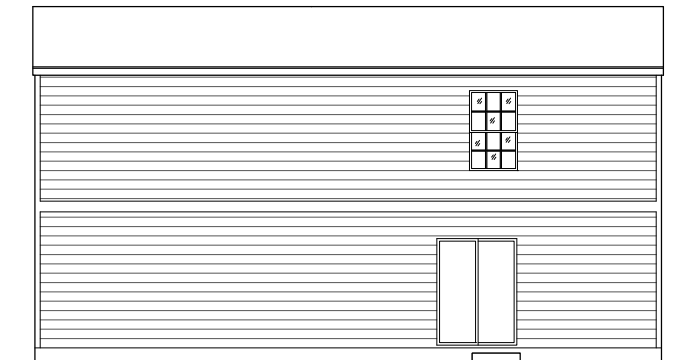
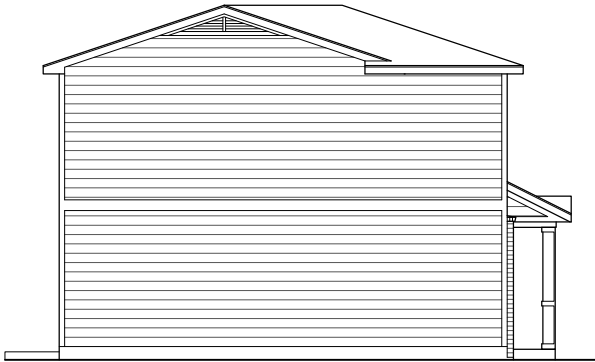
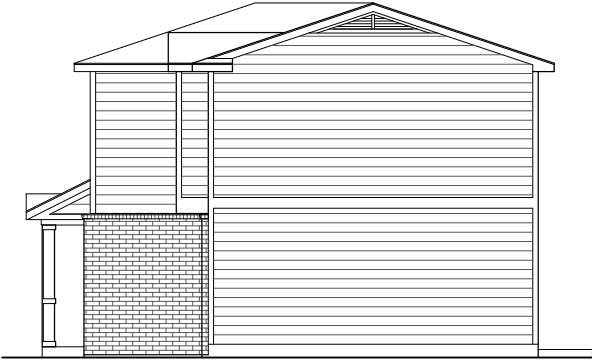
Answer Collection

1600 Series

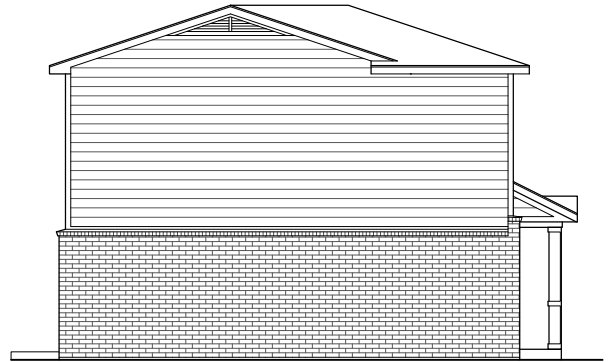
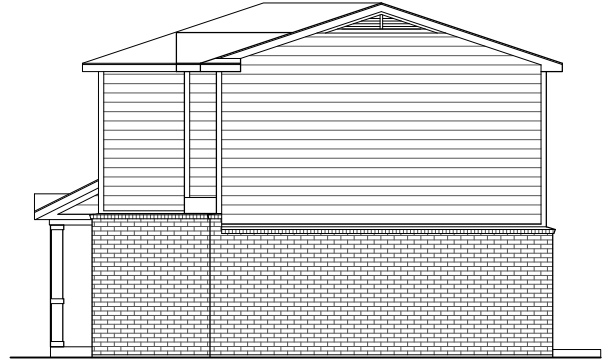
Plan 1652



Siding 3 Sides
Right, Left & Rear



Brick 3 Sides
1-Story Height Choice
Right, Left & Rear



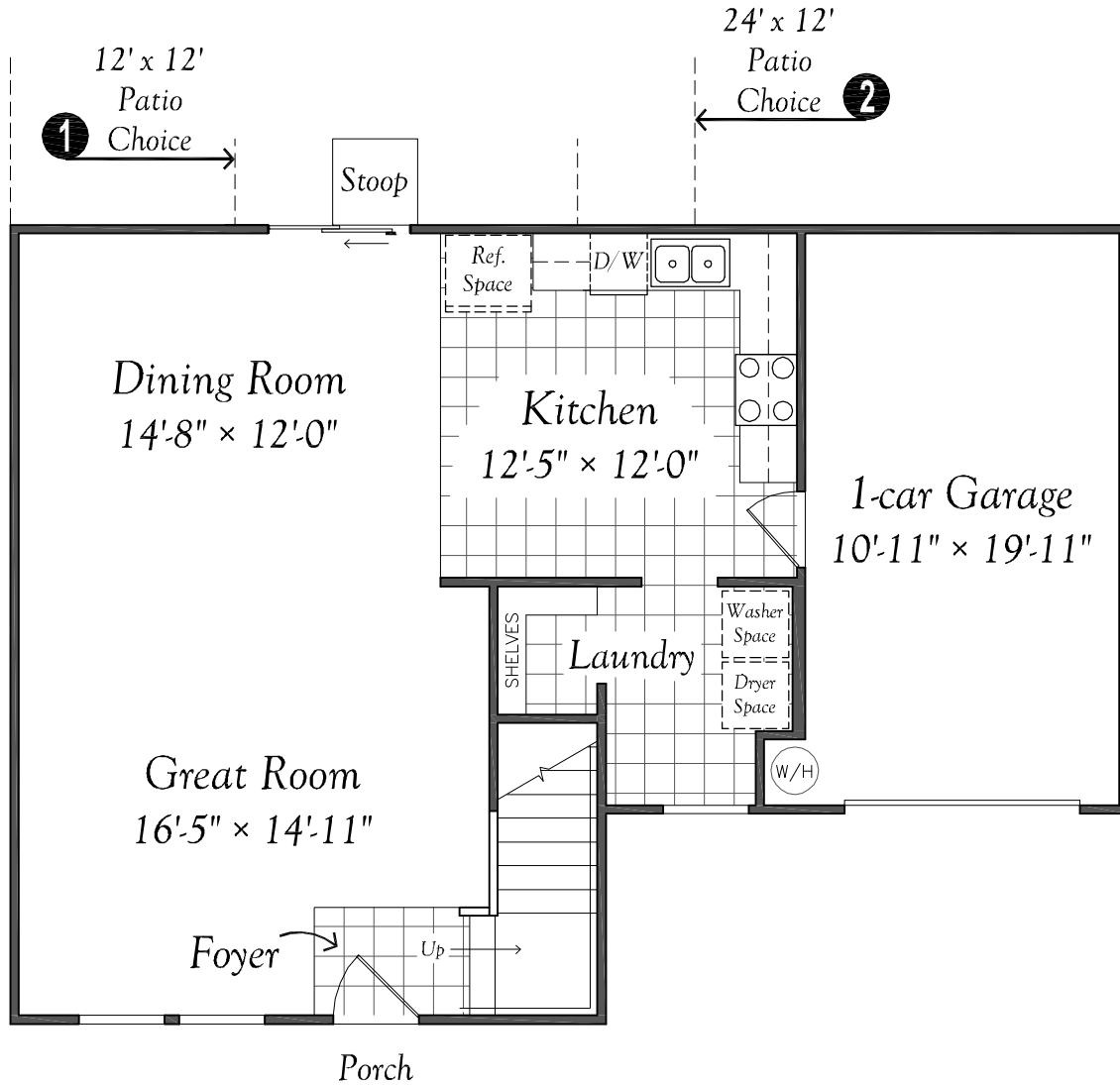
In the interest of continual improvement, Vintage Homes LLC reserves the right to make changes without notice or obligation. Prices are subject to change until a sales contract is accepted by Vintage Homes, LLC. Illustrations and specifications are correct at the time of publication, and are not to create any warranty or contract rights. All dimensions are approximate. Details shown may vary depending on the elevation and lifestyle choices selected. Please consult your Vintage New Home Consultant for details. **Effective Date: 7/29/2011**

Answer Collection

1600 Series

Plan 1652

Please Choose The First Floor Configuration That Best Suits Your Family's Lifestyle.



First Floor

Country Kitchen

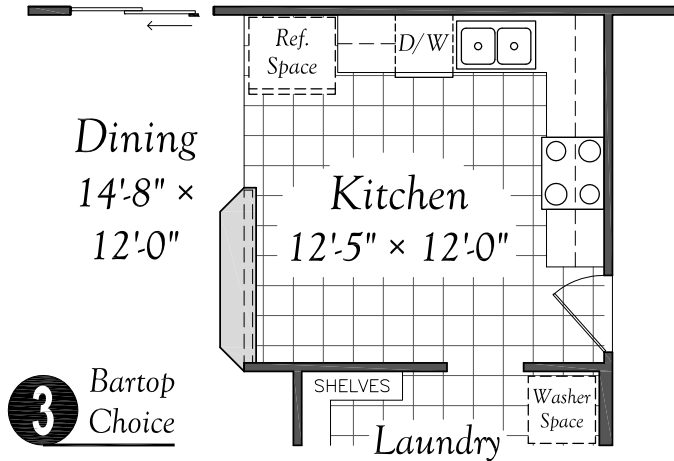
In the interest of continual improvement, Vintage Homes LLC reserves the right to make changes without notice or obligation. Prices are subject to change until a sales contract is accepted by Vintage Homes, LLC. Illustrations and specifications are correct at the time of publication, and are not to create any warranty or contract rights. All dimensions are approximate. Details shown may vary depending on the elevation and lifestyle choices selected. Please consult your Vintage New Home Consultant for details. **Effective Date: 7/29/2011**

Answer Collection

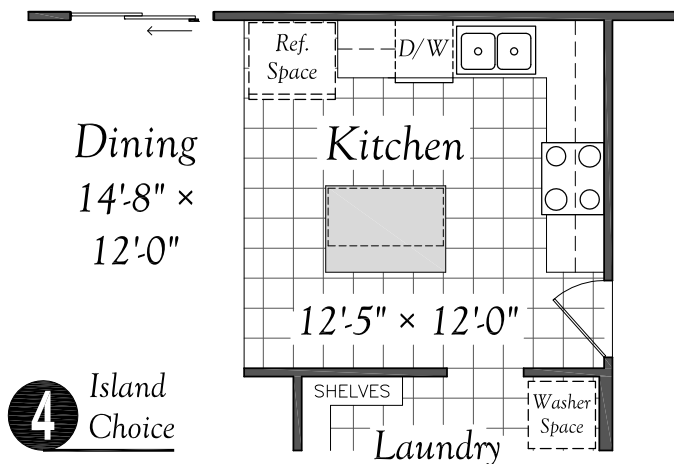
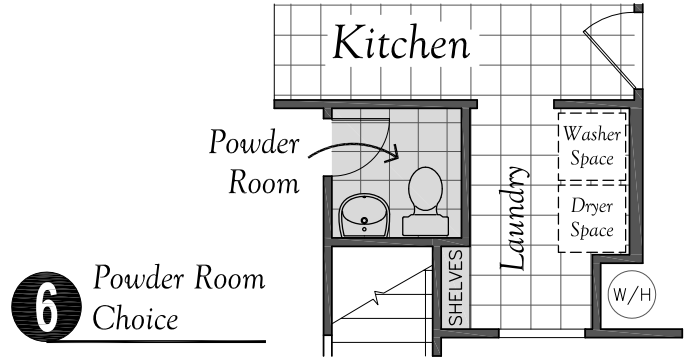
1600 Series

Plan 1652

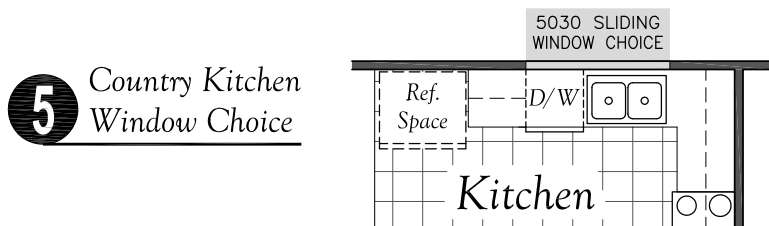
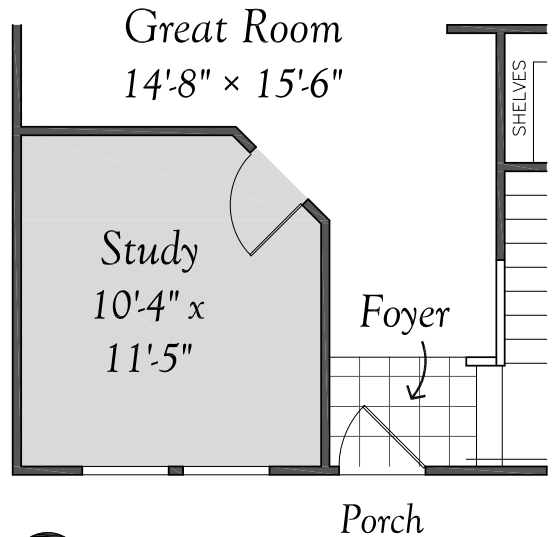
Please Choose The First Floor Configuration That Best Suits Your Family's Lifestyle.



Unavailable with:
(4) Island Choice



Unavailable with:
(3) Bartop Choice



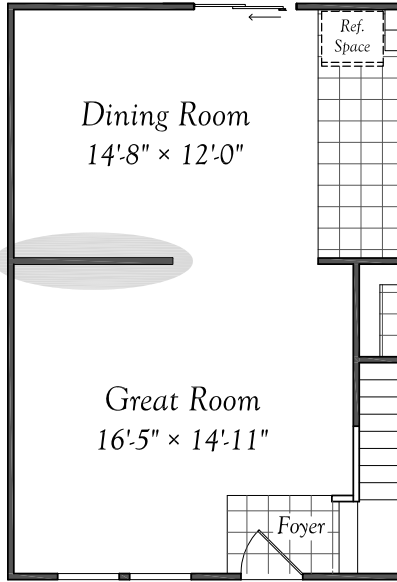
In the interest of continual improvement, Vintage Homes LLC reserves the right to make changes without notice or obligation. Prices are subject to change until a sales contract is accepted by Vintage Homes, LLC. Illustrations and specifications are correct at the time of publication, and are not to create any warranty or contract rights. All dimensions are approximate. Details shown may vary depending on the elevation and lifestyle choices selected. Please consult your Vintage New Home Consultant for details. **Effective Date: 7/29/2011**

Answer Collection

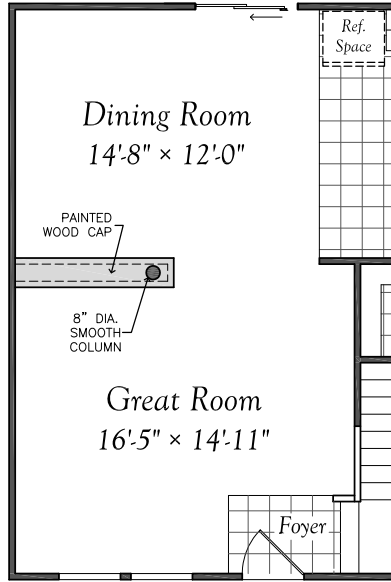
1600 Series

Plan 1652

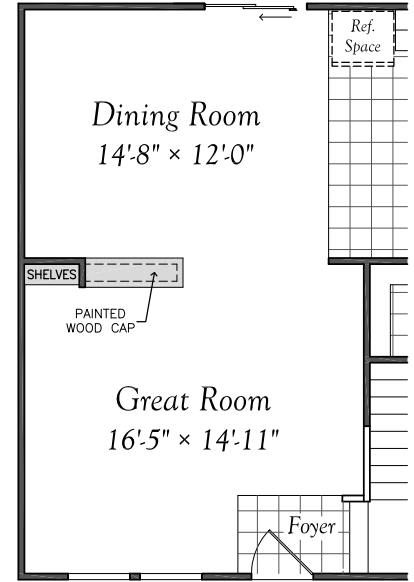
Please Choose The First Floor Configuration That Best Suits Your Family's Lifestyle.



9 Divider Wall Choice
(Location A)



10 Low Wall Choice W-2
(Location A)



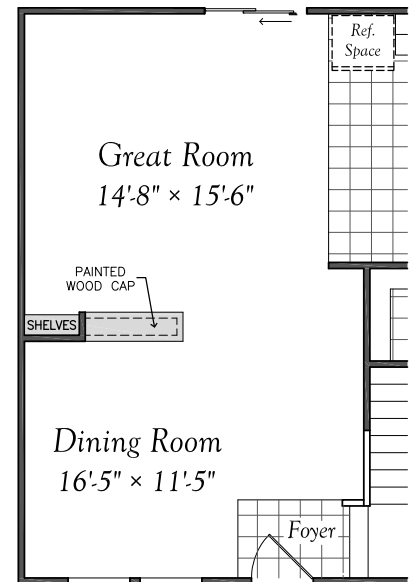
11 Low Wall Choice W-3
(Location A)



12 Divider Wall Choice
(Location B)



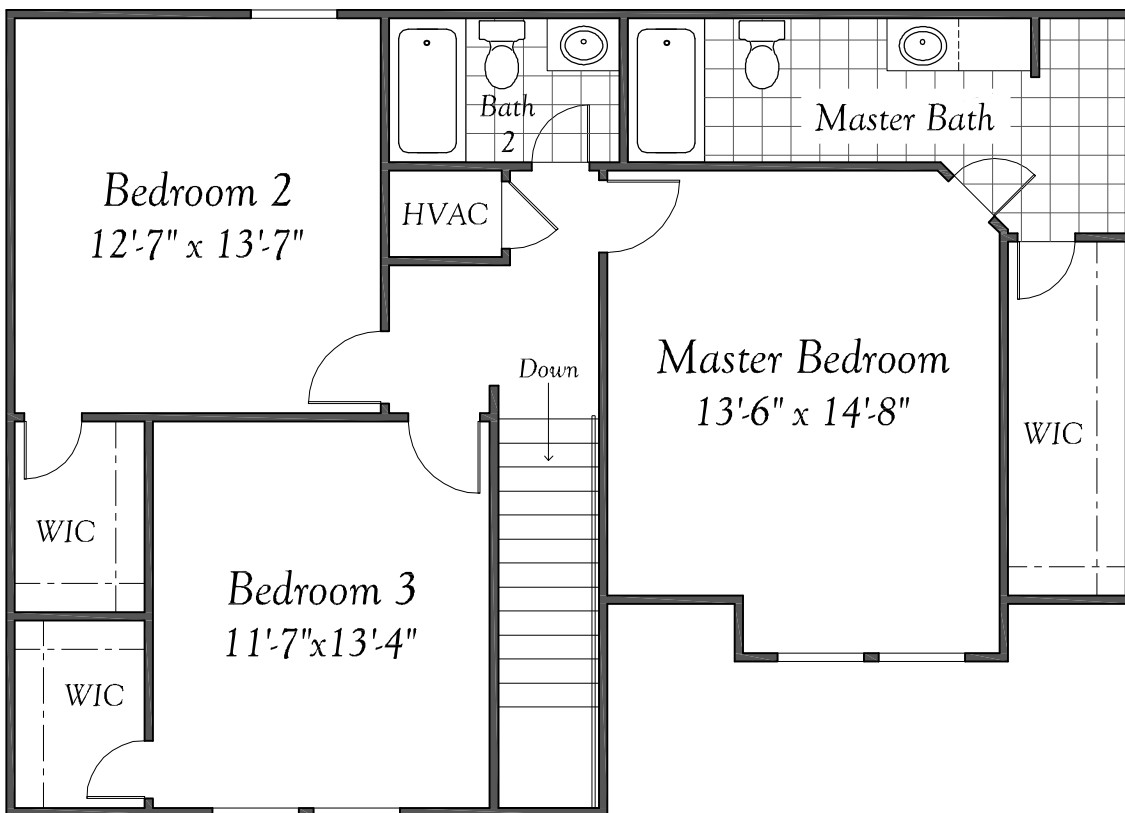
13 Low Wall Choice W-2
(Location B)



14 Low Wall Choice W-3
(Location B)

In the interest of continual improvement, Vintage Homes LLC reserves the right to make changes without notice or obligation. Prices are subject to change until a sales contract is accepted by Vintage Homes, LLC. Illustrations and specifications are correct at the time of publication, and are not to create any warranty or contract rights. All dimensions are approximate. Details shown may vary depending on the elevation and lifestyle choices selected. Please consult your Vintage New Home Consultant for details. **Effective Date: 7/29/2011**

Answer Collection
1600 Series
Plan 1652



Second Floor

Three Bedrooms

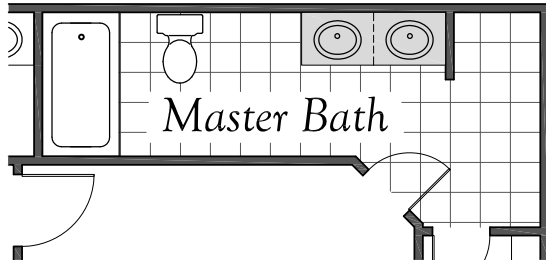
In the interest of continual improvement, Vintage Homes LLC reserves the right to make changes without notice or obligation. Prices are subject to change until a sales contract is accepted by Vintage Homes, LLC. Illustrations and specifications are correct at the time of publication, and are not to create any warranty or contract rights. All dimensions are approximate. Details shown may vary depending on the elevation and lifestyle choices selected. Please consult your Vintage New Home Consultant for details. **Effective Date: 7/29/2011**

Answer Collection

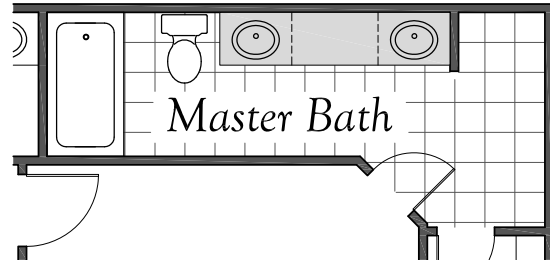
1600 Series

Plan 1652

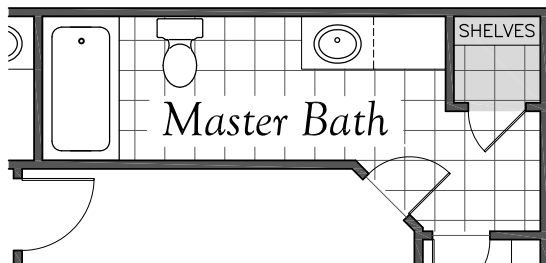
Please Choose The Second Floor Configuration That Best Suits Your Family's Lifestyle.



15 Double Vanity Choice

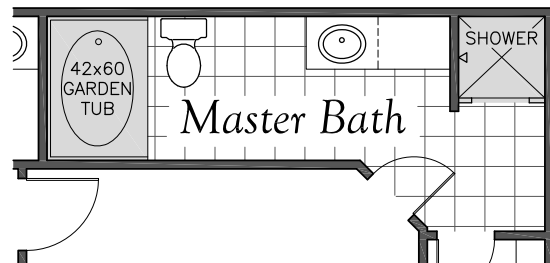


16 Extended Double Vanity Choice



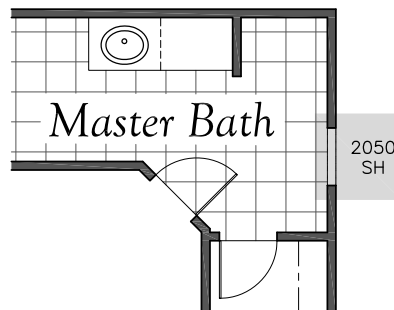
17 Linen Closet Choice

Unavailable with:
(17) Garden Tub with Shower



18 Garden Tub with Separate Shower Choice

Unavailable with:
(16) Master Linen

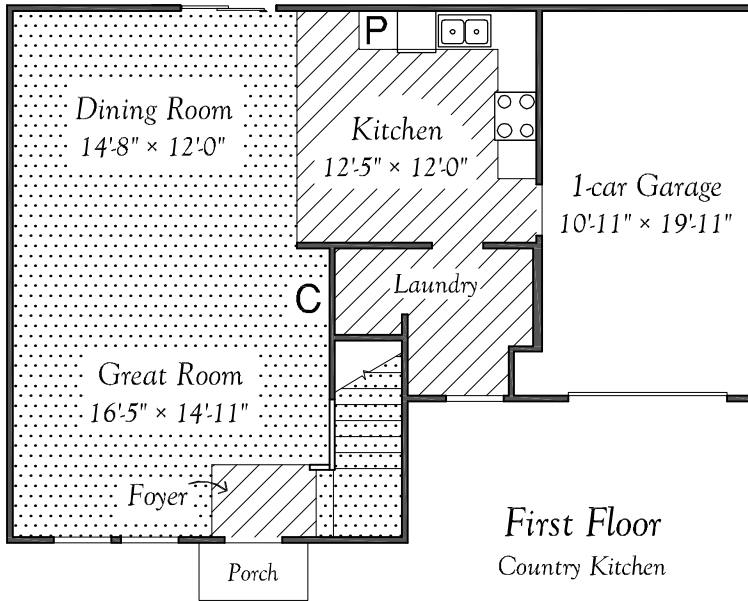


19 Master Bath Window Choice

In the interest of continual improvement, Vintage Homes LLC reserves the right to make changes without notice or obligation. Prices are subject to change until a sales contract is accepted by Vintage Homes, LLC. Illustrations and specifications are correct at the time of publication, and are not to create any warranty or contract rights. All dimensions are approximate. Details shown may vary depending on the elevation and lifestyle choices selected. Please consult your Vintage New Home Consultant for details. **Effective Date: 7/29/2011**

Answer Collection
1600 Series
Plan 1652

FLOORING MATRIX

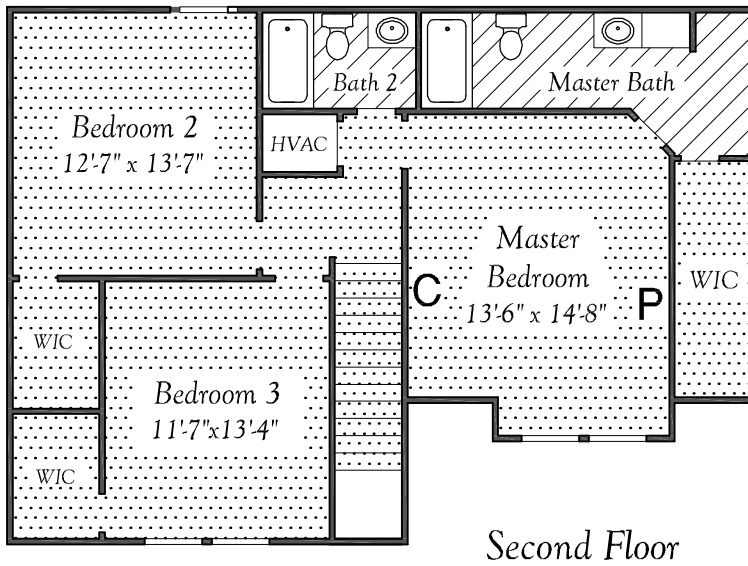


 VINYL

 CARPET

P = PHONE
OUTLET (2)

C = CABLE
OUTLET (2)



In the interest of continual improvement, Vintage Homes LLC reserves the right to make changes without notice or obligation. Prices are subject to change until a sales contract is accepted by Vintage Homes, LLC. Illustrations and specifications are correct at the time of publication, and are not to create any warranty or contract rights. All dimensions are approximate. Details shown may vary depending on the elevation and lifestyle choices selected. Please consult your Vintage New Home Consultant for details. **Effective Date: 7/29/2011**