
Answer Collection
2300 Series
Plan 2349



Elevation Aw



Elevation Ab



Elevation Bw



Elevation Bb

In the interest of continual improvement, Vintage Homes LLC reserves the right to make changes without notice or obligation. Prices are subject to change until a sales contract is accepted by Vintage Homes, LLC. Illustrations and specifications are correct at the time of publication, and are not to create any warranty or contract rights. All dimensions are approximate. Details shown may vary depending on the elevation and lifestyle choices selected. Please consult your Vintage New Home Consultant for details. **Effective Date: 12/23/2011**

Answer Collection
2300 Series
Plan 2349



Elevation Cw



Elevation Cb



Elevation Dw



Elevation Db



Elevation Ew

In the interest of continual improvement, Vintage Homes LLC reserves the right to make changes without notice or obligation. Prices are subject to change until a sales contract is accepted by Vintage Homes, LLC. Illustrations and specifications are correct at the time of publication, and are not to create any warranty or contract rights. All dimensions are approximate. Details shown may vary depending on the elevation and lifestyle choices selected. Please consult your Vintage New Home Consultant for details. **Effective Date: 12/23/2011**

Answer Collection

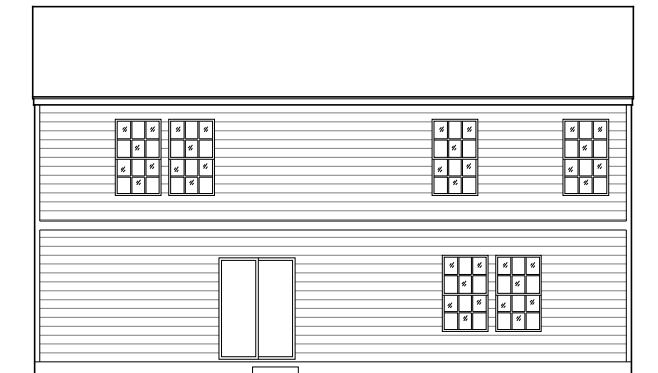
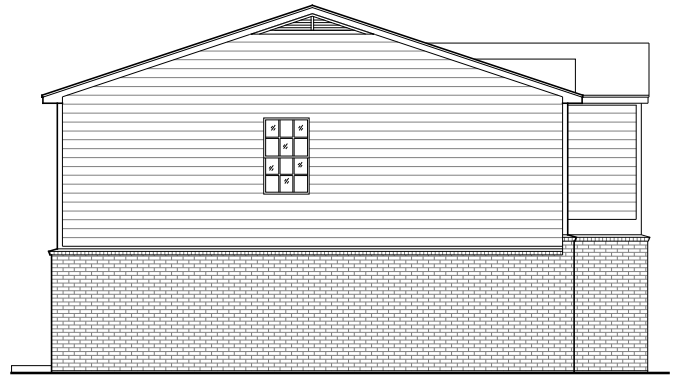
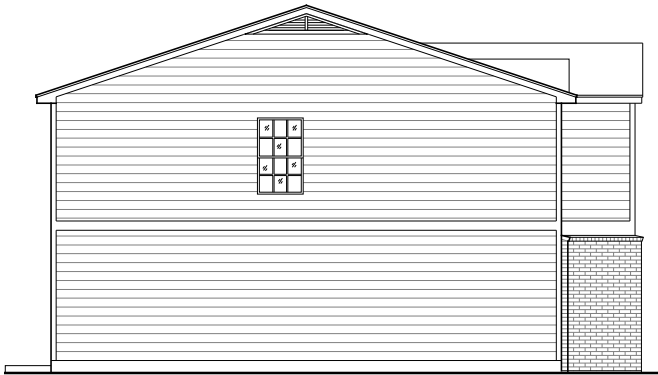
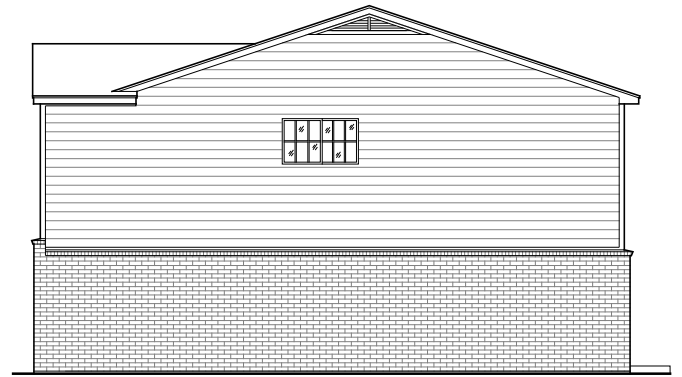
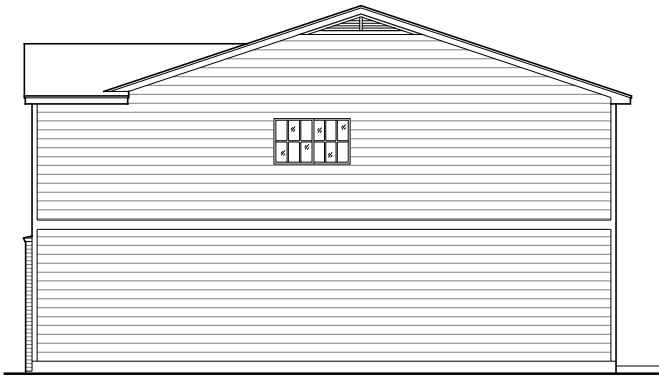
2300 Series

Plan 2349

Please Choose The Configuration That Best Suits Your Family's Lifestyle.

Siding 3 Sides
Right, Left & Rear

Brick 3 Sides
1-Story Height Choice
Right, Left & Rear



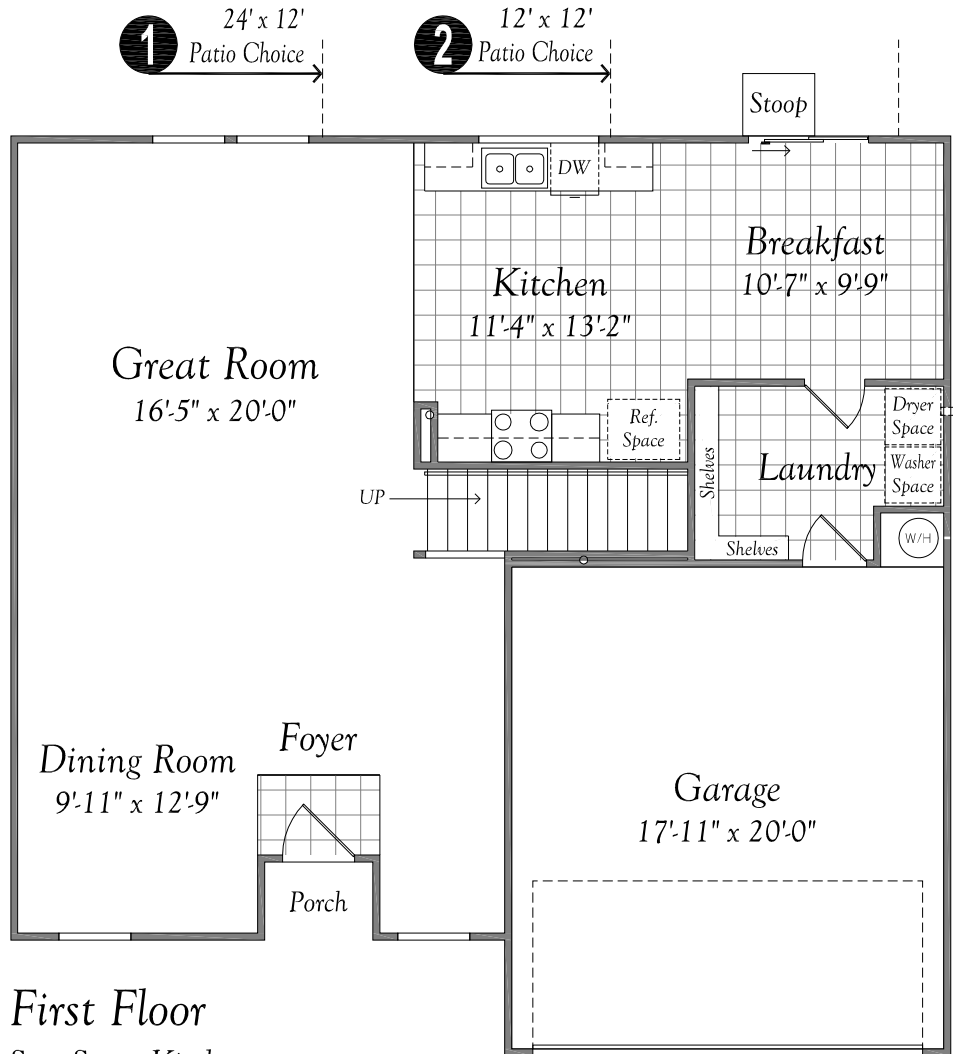
In the interest of continual improvement, Vintage Homes LLC reserves the right to make changes without notice or obligation. Prices are subject to change until a sales contract is accepted by Vintage Homes, LLC. Illustrations and specifications are correct at the time of publication, and are not to create any warranty or contract rights. All dimensions are approximate. Details shown may vary depending on the elevation and lifestyle choices selected. Please consult your Vintage New Home Consultant for details. **Effective Date: 12/23/2011**

Answer Collection

2300 Series

Plan 2349

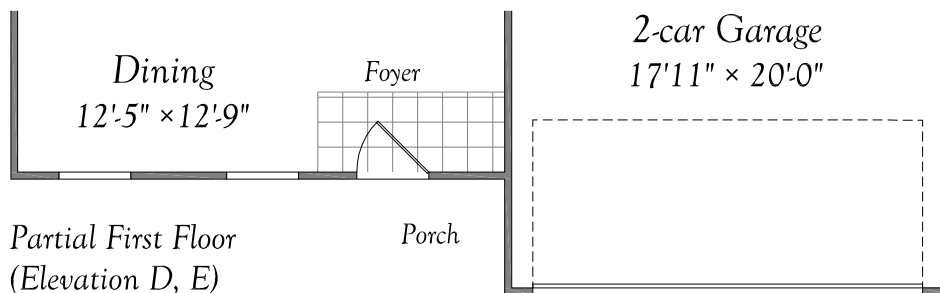
Please choose the first floor configuration that best suits your family's lifestyle.



First Floor

Step Saver Kitchen
(Elevation A,B,C)

Note: Location of front door and windows may vary with elevation.



Partial First Floor
(Elevation D, E)

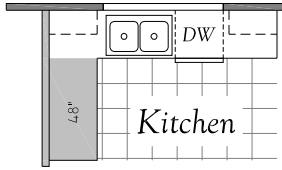
In the interest of continual improvement, Vintage Homes LLC reserves the right to make changes without notice or obligation. Prices are subject to change until a sales contract is accepted by Vintage Homes, LLC. Illustrations and specifications are correct at the time of publication, and are not to create any warranty or contract rights. All dimensions are approximate. Details shown may vary depending on the elevation and lifestyle choices selected. Please consult your Vintage New Home Consultant for details. **Effective Date: 12/23/2011**

Answer Collection

2300 Series

Plan 2349

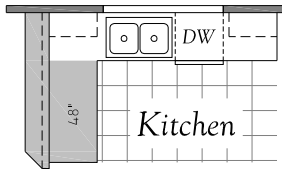
Please choose the first floor configuration that best suits your family's lifestyle.



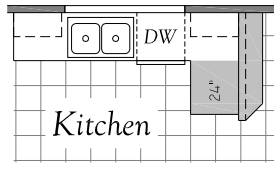
3 Peninsula - A
with 45" Wall
Choice



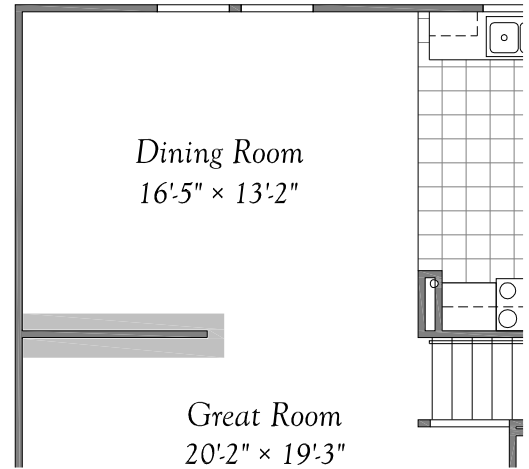
4 Peninsula - B
with 45" Wall
Choice



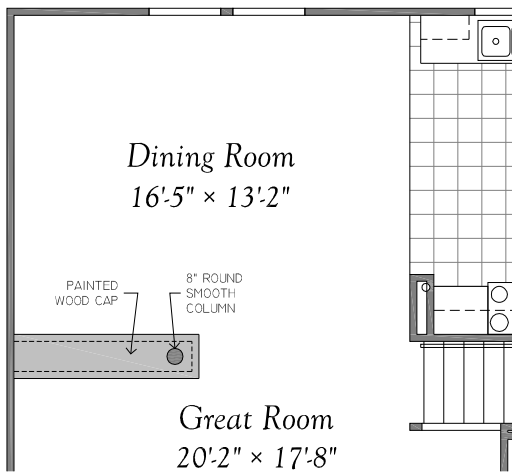
5 Peninsula - A
with Bartop
Choice



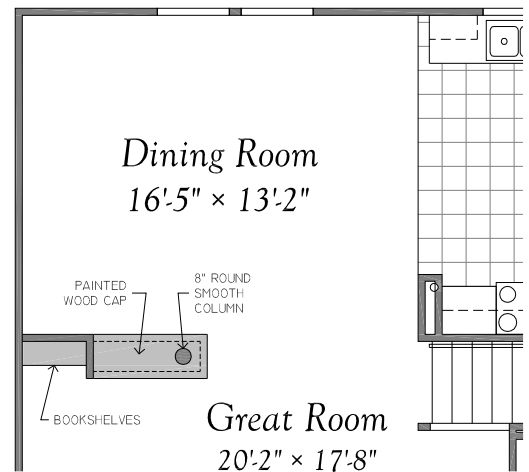
6 Peninsula - B
with Bartop
Choice



7 Divider Wall Choice
W-1 Location A



8 Low Wall Choice
W-2 Location A



9 Low Wall Choice
W-3 Location A

In the interest of continual improvement, Vintage Homes LLC reserves the right to make changes without notice or obligation. Prices are subject to change until a sales contract is accepted by Vintage Homes, LLC. Illustrations and specifications are correct at the time of publication, and are not to create any warranty or contract rights. All dimensions are approximate. Details shown may vary depending on the elevation and lifestyle choices selected. Please consult your Vintage New Home Consultant for details. **Effective Date: 12/23/2011**

Answer Collection

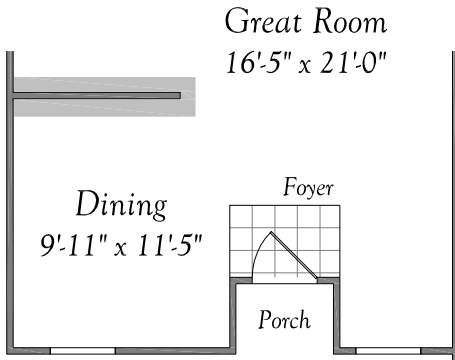
2300 Series

Plan 2349

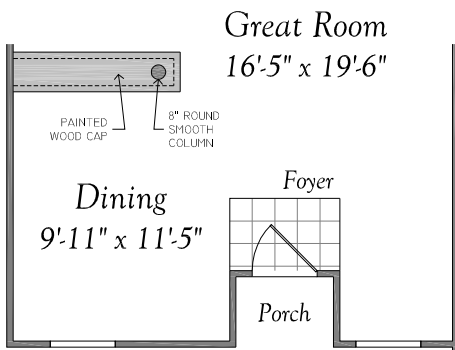
Please choose the first floor configuration that best suits your family's lifestyle.

Note: Location of front door and windows may vary with elevation.

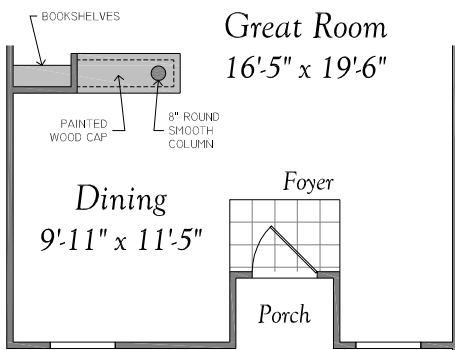
Elevation A, B, C Choices



10 *Divider Wall Choice W-1 Location B*
(Elevation A,B,C)

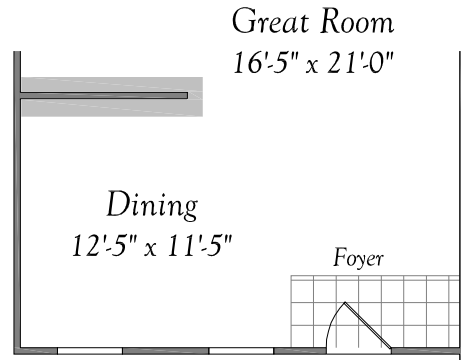


11 *Low Wall Choice W-2 Location B*
(Elevation A,B,C)

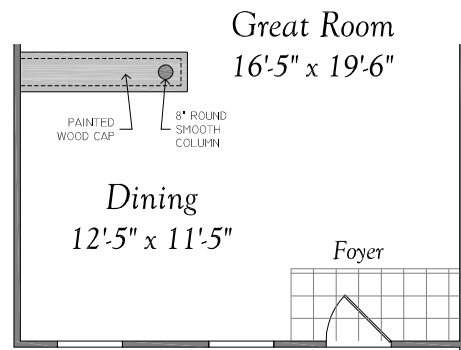


12 *Low Wall Choice W-3 Location B*
(Elevation A,B,C)

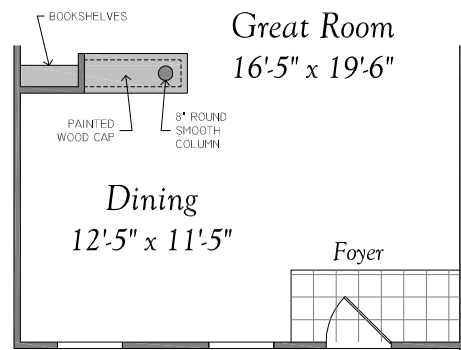
Elevation D, E Choices



13 *Divider Wall Choice W-1 Location B*
(Elevation D, E)



14 *Low Wall Choice W-2 Location B*
(Elevation D, E)



15 *Low Wall Choice W-3 Location B*
(Elevation D, E)

In the interest of continual improvement, Vintage Homes LLC reserves the right to make changes without notice or obligation. Prices are subject to change until a sales contract is accepted by Vintage Homes, LLC. Illustrations and specifications are correct at the time of publication, and are not to create any warranty or contract rights. All dimensions are approximate. Details shown may vary depending on the elevation and lifestyle choices selected. Please consult your Vintage New Home Consultant for details. **Effective Date: 12/23/2011**

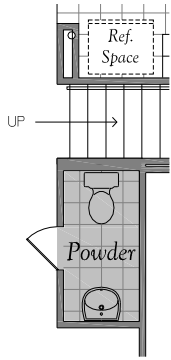
Answer Collection

2300 Series

Plan 2349

Please choose the first floor configuration that best suits your family's lifestyle.

Note: Location of front door and windows may vary with elevation.

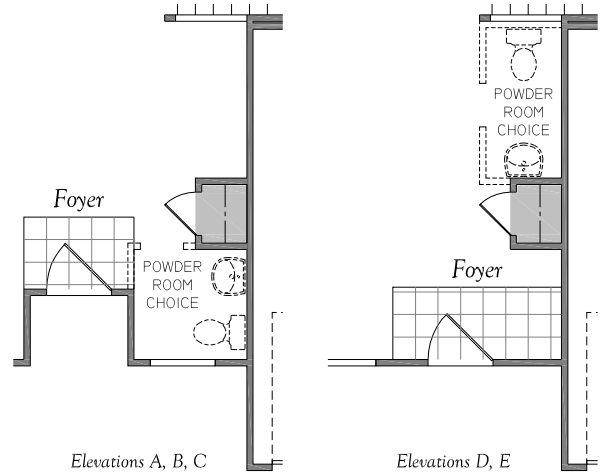


16 Powder Room Choice
Location B

(Elevations A, B, C, D, E)

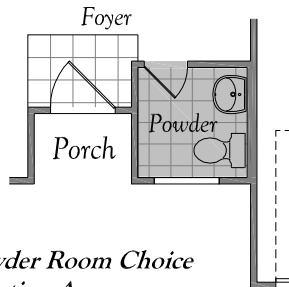


17 Fireplace Choice

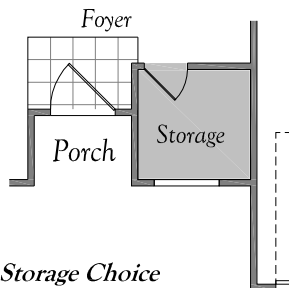


18 Closet Choice

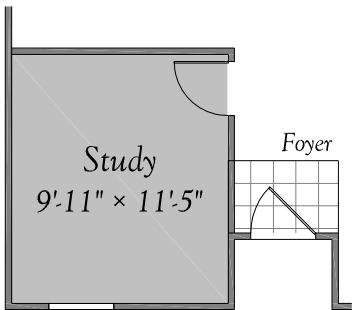
Elevation A, B, C Choices



21 Powder Room Choice
Location A
(Elevations A, B, C)

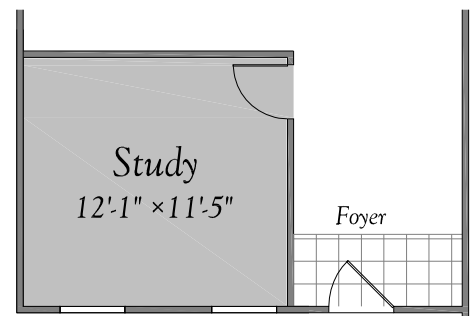


22 Storage Choice
(Elevation A, B, C)



20 Study Choice
(Elev. A, B, C only)

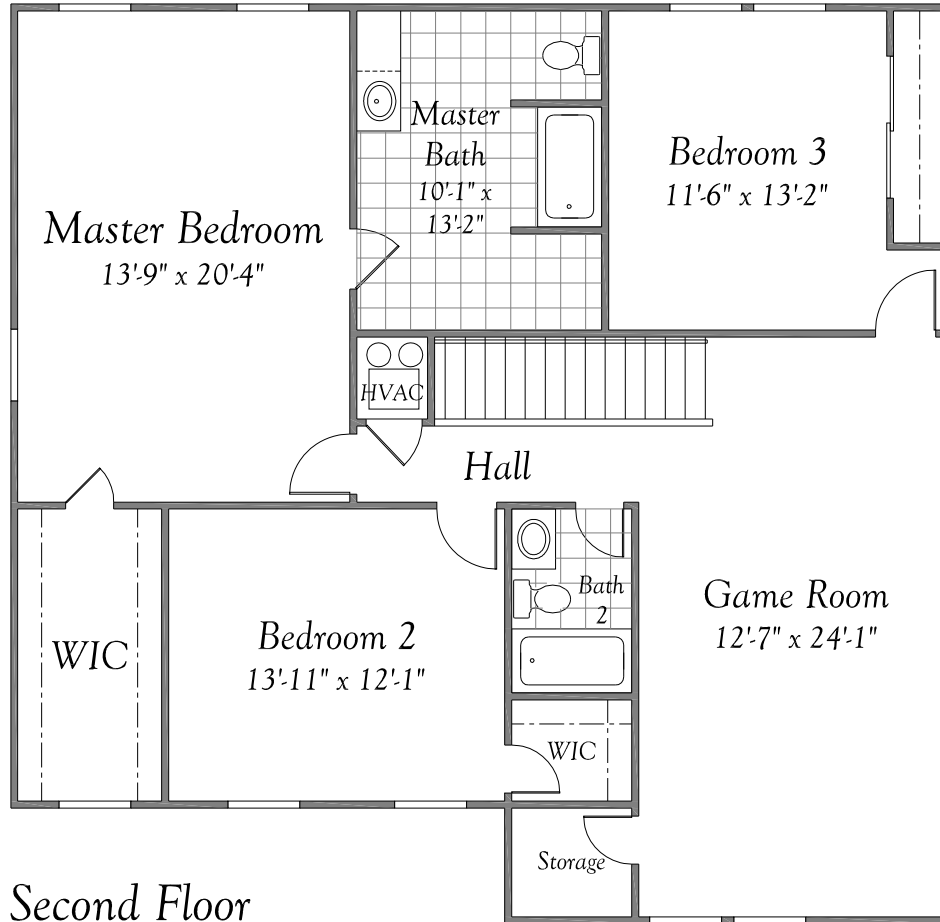
Elevation D, E Choices



23 Study Choice
(Elevation D, E)

In the interest of continual improvement, Vintage Homes LLC reserves the right to make changes without notice or obligation. Prices are subject to change until a sales contract is accepted by Vintage Homes, LLC. Illustrations and specifications are correct at the time of publication, and are not to create any warranty or contract rights. All dimensions are approximate. Details shown may vary depending on the elevation and lifestyle choices selected. Please consult your Vintage New Home Consultant for details. **Effective Date: 12/23/2011**

Answer Collection
2300 Series
Plan 2349



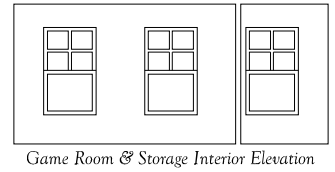
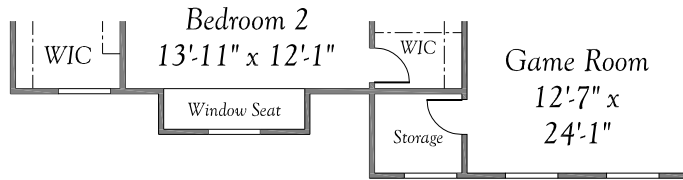
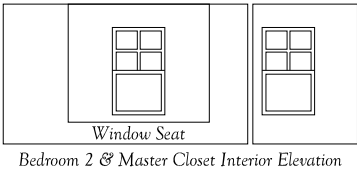
Second Floor
*Three Bedrooms with
Game Room*

In the interest of continual improvement, Vintage Homes LLC reserves the right to make changes without notice or obligation. Prices are subject to change until a sales contract is accepted by Vintage Homes, LLC. Illustrations and specifications are correct at the time of publication, and are not to create any warranty or contract rights. All dimensions are approximate. Details shown may vary depending on the elevation and lifestyle choices selected. Please consult your Vintage New Home Consultant for details. **Effective Date: 12/23/2011**

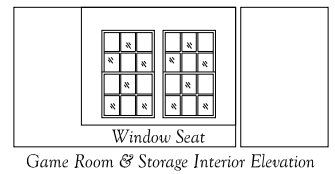
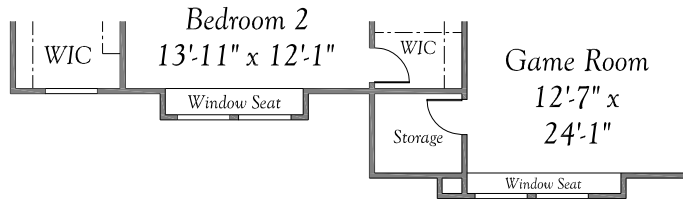
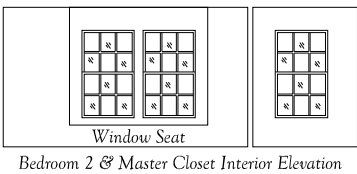
Answer Collection

2300 Series

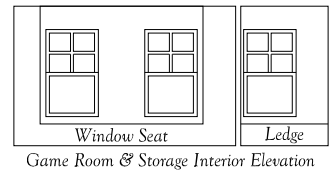
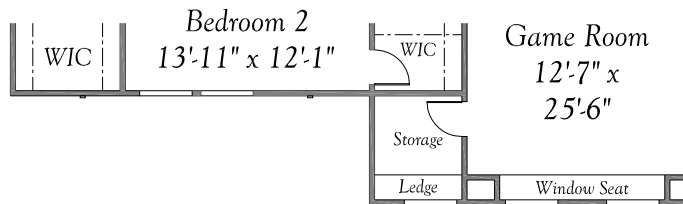
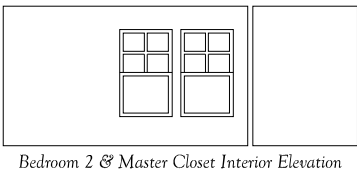
Plan 2349



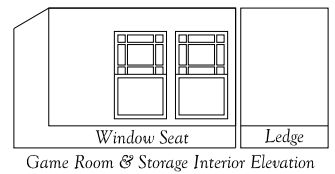
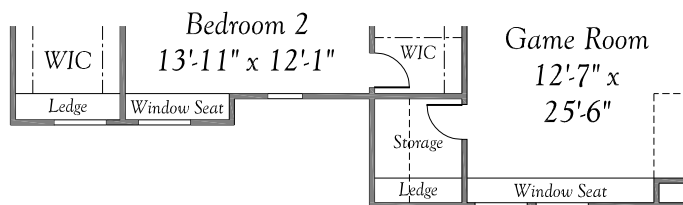
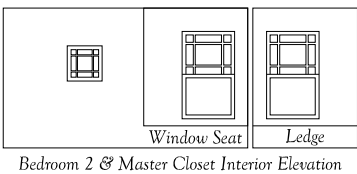
Partial Second Floor
(Elevation Bw)



Partial Second Floor
(Elevation Cw)



Partial Second Floor
(Elevation Dw)



Partial Second Floor
(Elevation Ew)

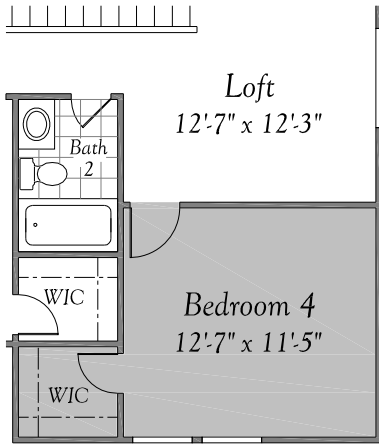
In the interest of continual improvement, Vintage Homes LLC reserves the right to make changes without notice or obligation. Prices are subject to change until a sales contract is accepted by Vintage Homes, LLC. Illustrations and specifications are correct at the time of publication, and are not to create any warranty or contract rights. All dimensions are approximate. Details shown may vary depending on the elevation and lifestyle choices selected. Please consult your Vintage New Home Consultant for details. **Effective Date: 12/23/2011**

Answer Collection

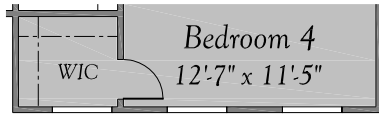
2300 Series

Plan 2349

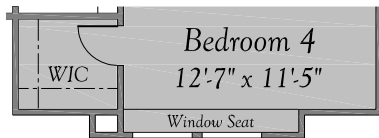
Please choose the second floor configuration that best suits your family's lifestyle.



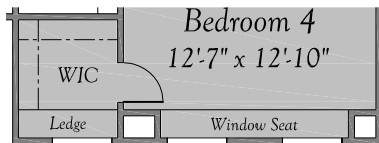
Elevations Aw, Ab, Bb, Cb, Db



Elevation Bw



Elevation Cw

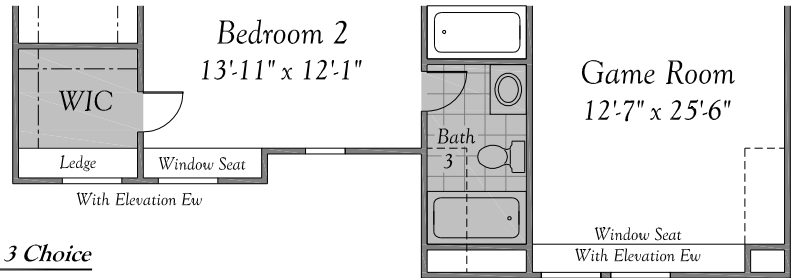
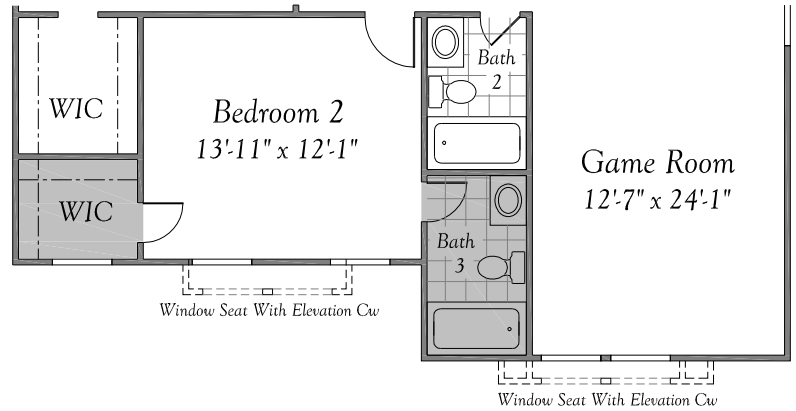


Elevation Dw



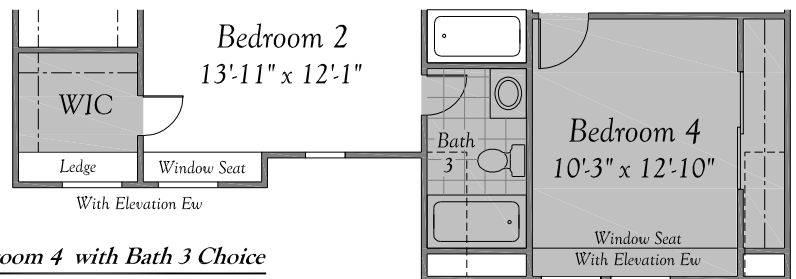
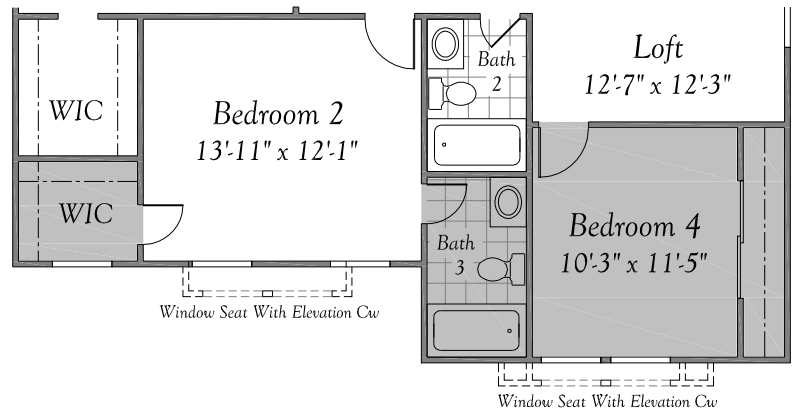
Elevation Ew

24 *Bedroom 4 Choice*



25 *Bath 3 Choice*

Unavailable with Elevations Bw, Dw



26 *Bedroom 4 with Bath 3 Choice*

Unavailable with Elevations Bw, Dw

In the interest of continual improvement, Vintage Homes LLC reserves the right to make changes without notice or obligation. Prices are subject to change until a sales contract is accepted by Vintage Homes, LLC. Illustrations and specifications are correct at the time of publication, and are not to create any warranty or contract rights. All dimensions are approximate. Details shown may vary depending on the elevation and lifestyle choices selected. Please consult your Vintage New Home Consultant for details. **Effective Date: 12/23/2011**

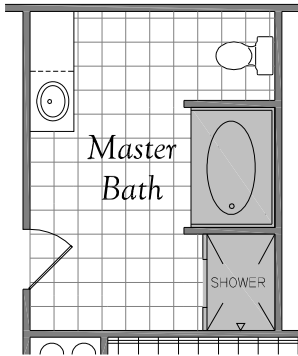
Answer Collection

2300 Series

Plan 2349

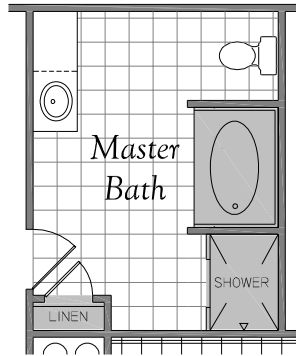
Please choose the second floor configuration that best suits your family's lifestyle.

Master Bath Choices



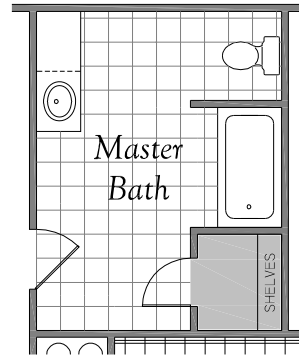
27 *Garden Tub with Separate Shower Choice*

Unavailable with:
(29) Master Linen



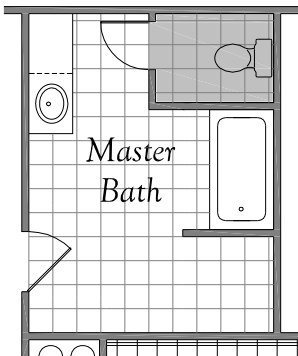
28 *Garden Tub with Separate Shower & Linen Choice*

Unavailable with:
(29) Master Linen

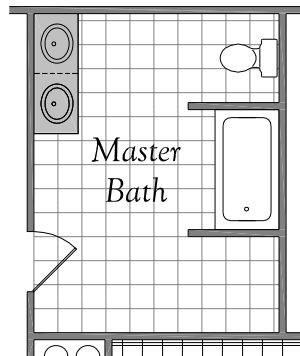


29 *Master Linen Choice*

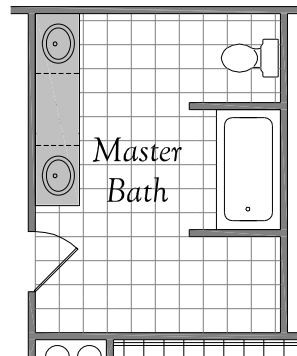
Unavailable with:
(27) Garden Tub with Shower
(28) Garden Tub, Shower, Linen



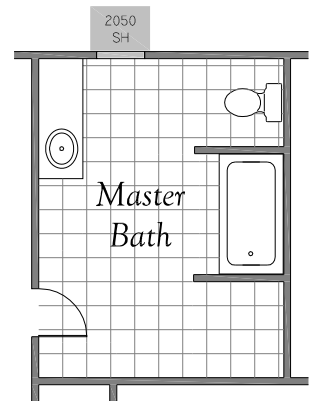
30 *Enclosed Water Closet Choice*



31 *Double Vanity Choice*



32 *Extended Double Vanity Choice*



33 *Master Bath Window Choice*

In the interest of continual improvement, Vintage Homes LLC reserves the right to make changes without notice or obligation. Prices are subject to change until a sales contract is accepted by Vintage Homes, LLC. Illustrations and specifications are correct at the time of publication, and are not to create any warranty or contract rights. All dimensions are approximate. Details shown may vary depending on the elevation and lifestyle choices selected. Please consult your Vintage New Home Consultant for details. **Effective Date: 12/23/2011**

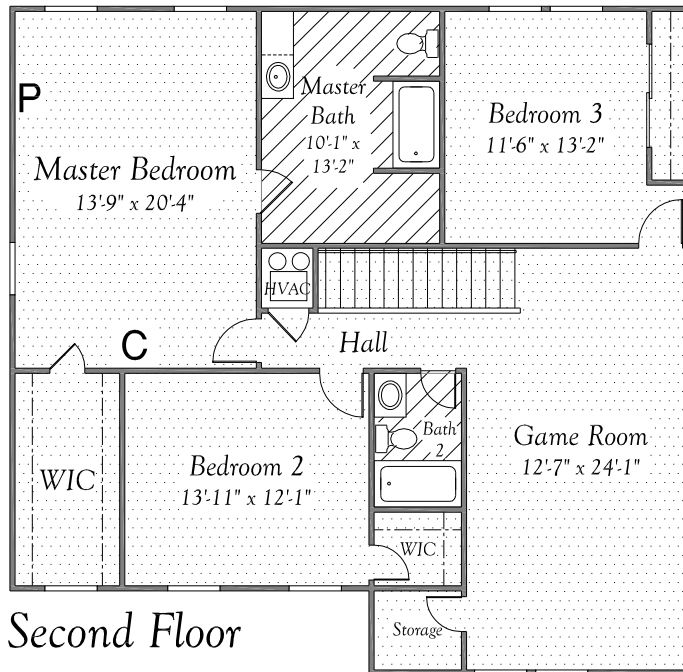
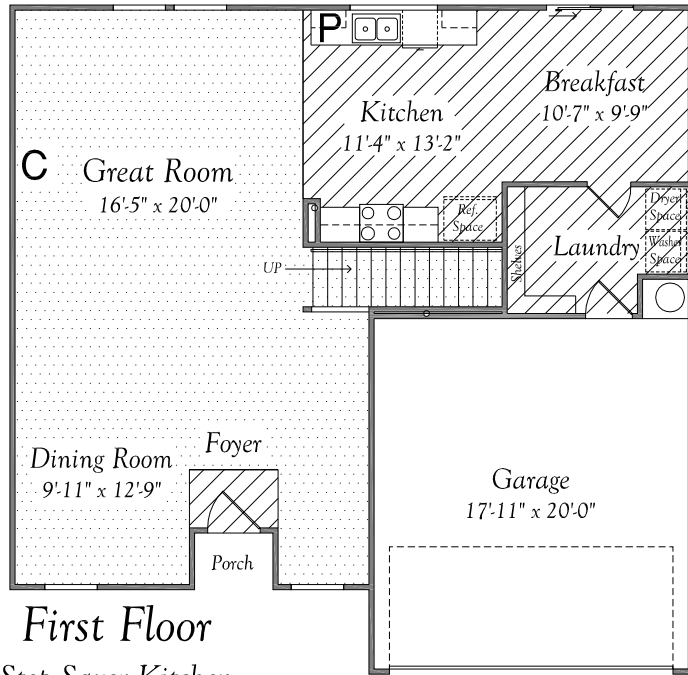
Answer Collection

2300 Series

Plan 2349

FLOORING MATRIX

ELEVATIONS "A, B, C"



CARPET



VINYL

P = PHONE OUTLET (2)

C = CABLE OUTLET (2)

In the interest of continual improvement, Vintage Homes LLC reserves the right to make changes without notice or obligation. Prices are subject to change until a sales contract is accepted by Vintage Homes, LLC. Illustrations and specifications are correct at the time of publication, and are not to create any warranty or contract rights. All dimensions are approximate. Details shown may vary depending on the elevation and lifestyle choices selected. Please consult your Vintage New Home Consultant for details. **Effective Date: 12/23/2011**

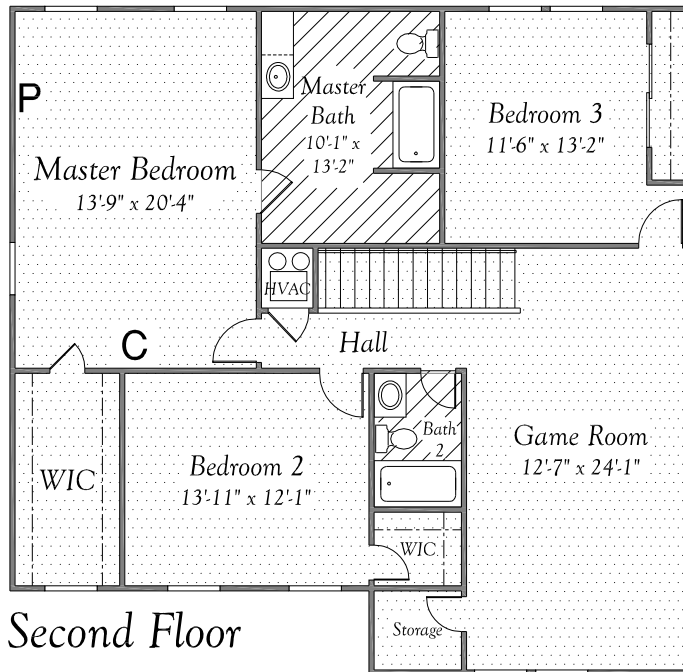
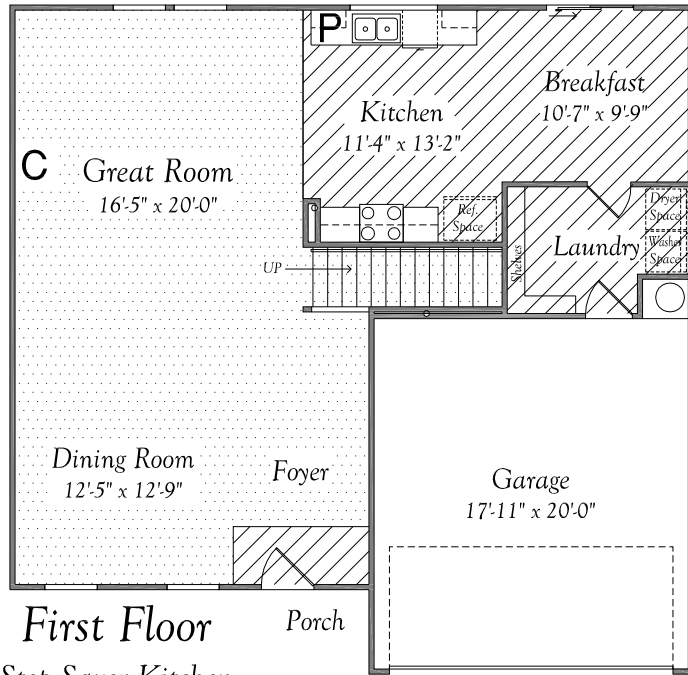
Answer Collection

2300 Series

Plan 2349

FLOORING MATRIX

ELEVATION "D, E"



P = PHONE OUTLET (2)

C = CABLE OUTLET (2)

In the interest of continual improvement, Vintage Homes LLC reserves the right to make changes without notice or obligation. Prices are subject to change until a sales contract is accepted by Vintage Homes, LLC. Illustrations and specifications are correct at the time of publication, and are not to create any warranty or contract rights. All dimensions are approximate. Details shown may vary depending on the elevation and lifestyle choices selected. Please consult your Vintage New Home Consultant for details. **Effective Date: 12/23/2011**