

Answer Collection
1300 Series
Plan 1351



Elevation Aw



Elevation Ab



Elevation Bw



Elevation Bb



Elevation Cw



Elevation Cb

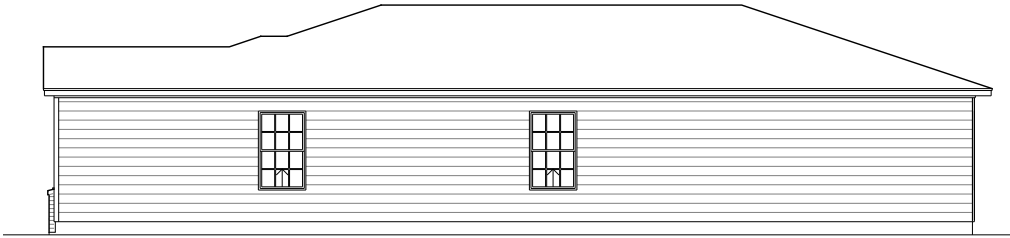
In the interest of continual improvement, Vintage Homes LLC reserves the right to make changes without notice or obligation. Prices are subject to change until a sales contract is accepted by Vintage Homes, LLC. Illustrations and specifications are correct at the time of publication, and are not to create any warranty or contract rights. All dimensions are approximate. Details shown may vary depending on the elevation and lifestyle choices selected. Please consult your Vintage New Home Consultant for details. **Effective Date: 7/12/2011**

Answer Collection

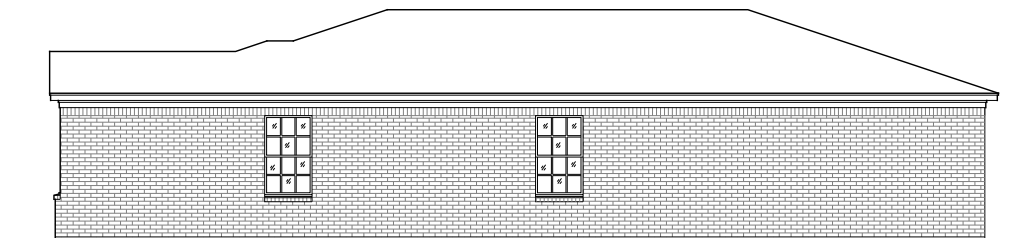
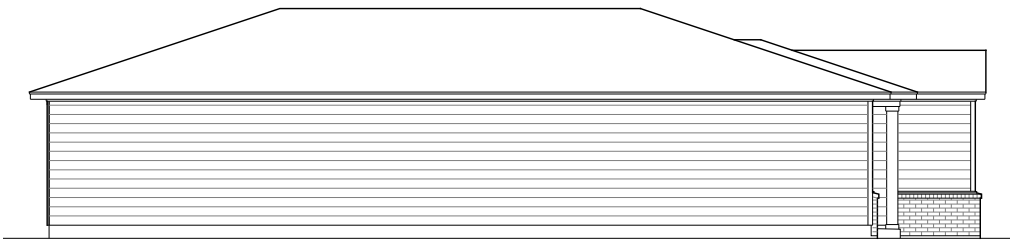
1300 Series

PLAN 1351

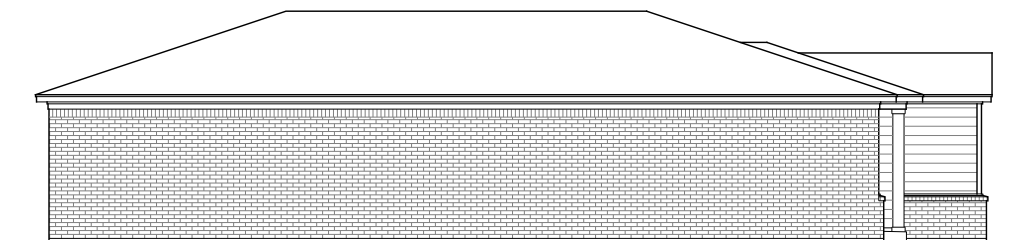
Please choose the configuration that best suits your family's lifestyle.



Siding 3 Sides
Right, Left & Rear



Brick 3 Sides Choice
Right, Left & Rear



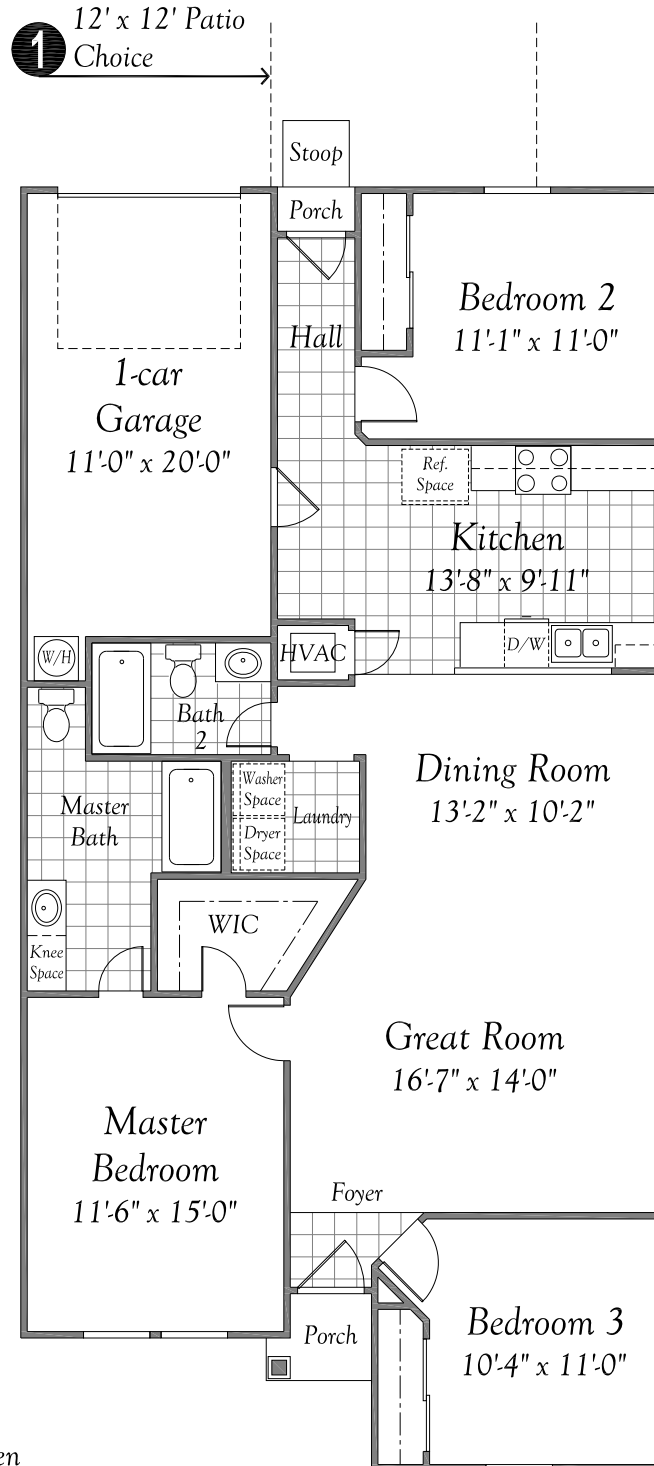
In the interest of continual improvement, Vintage Homes LLC reserves the right to make changes without notice or obligation. Prices are subject to change until a sales contract is accepted by Vintage Homes, LLC. Illustrations and specifications are correct at the time of publication, and are not to create any warranty or contract rights. All dimensions are approximate. Details shown may vary depending on the elevation and lifestyle choices selected. Please consult your Vintage New Home Consultant for details. **Effective Date: 7/12/2011**

Answer Collection

1300 Series

Plan 1351

Please choose the first floor configuration that best suits your family's lifestyle.



First Floor
Step Saver Kitchen

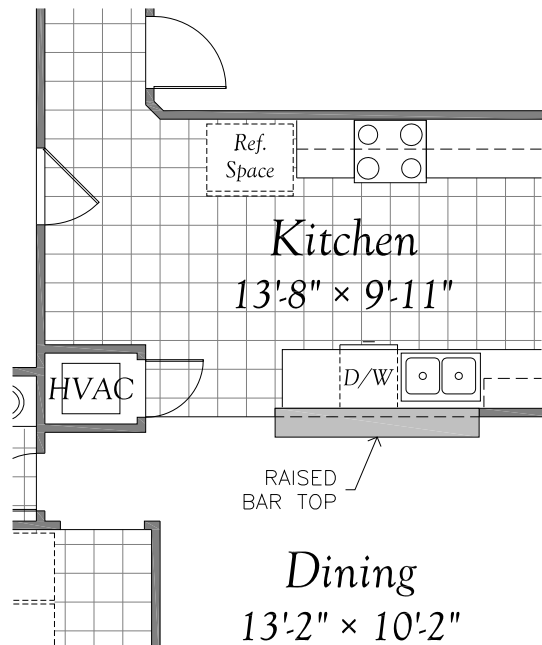
In the interest of continual improvement, Vintage Homes LLC reserves the right to make changes without notice or obligation. Prices are subject to change until a sales contract is accepted by Vintage Homes, LLC. Illustrations and specifications are correct at the time of publication, and are not to create any warranty or contract rights. All dimensions are approximate. Details shown may vary depending on the elevation and lifestyle choices selected. Please consult your Vintage New Home Consultant for details. **Effective Date: 7/12/2011**

Answer Collection

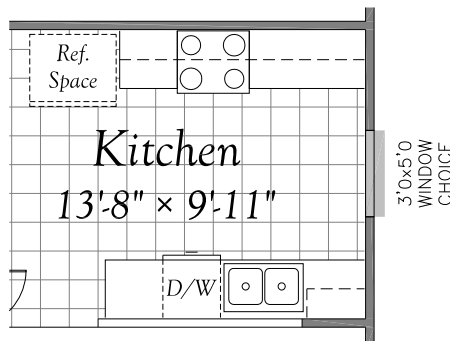
1300 Series

Plan 1351

Please choose the configuration that best suits your family's lifestyle.



2 Bartop Choice



3 Kitchen Window Choice

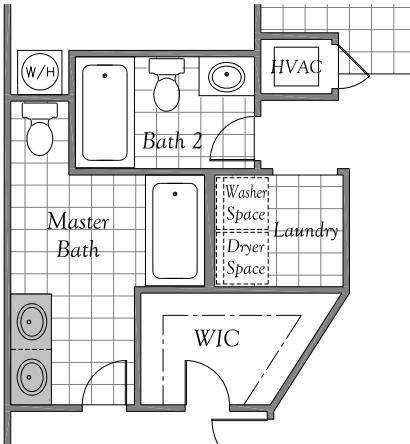
In the interest of continual improvement, Vintage Homes LLC reserves the right to make changes without notice or obligation. Prices are subject to change until a sales contract is accepted by Vintage Homes, LLC. Illustrations and specifications are correct at the time of publication, and are not to create any warranty or contract rights. All dimensions are approximate. Details shown may vary depending on the elevation and lifestyle choices selected. Please consult your Vintage New Home Consultant for details. **Effective Date: 7/12/2011**

Answer Collection

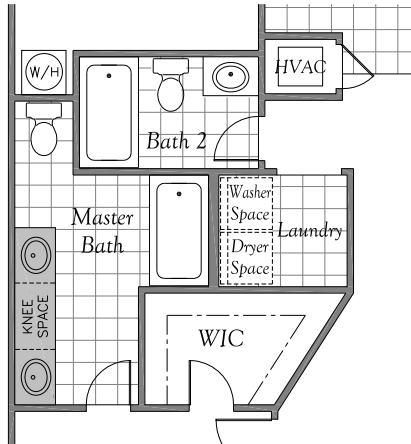
1300 Series

Plan 1351

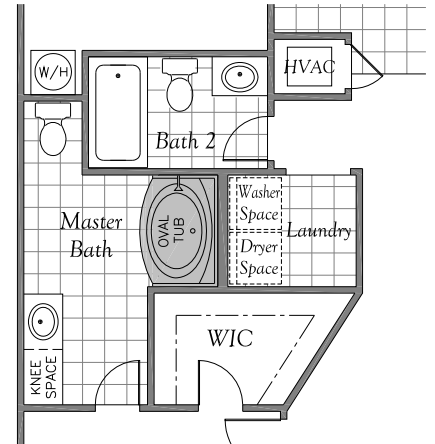
Please choose the configuration that best suits your family's lifestyle.



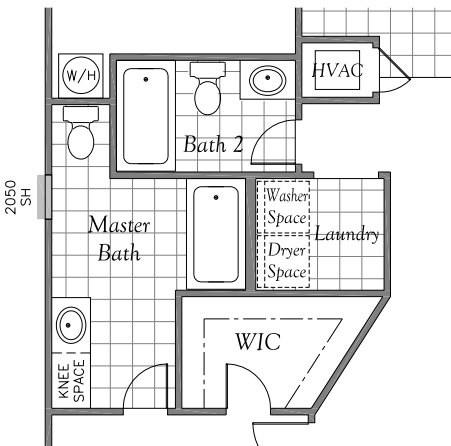
5 *Double Vanity Choice*



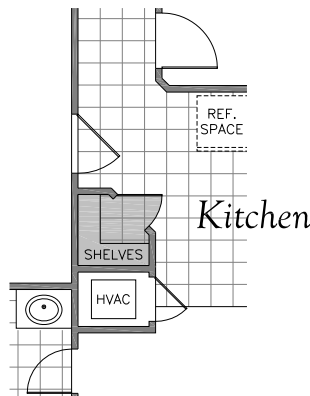
6 *Extended Double Vanity Choice*



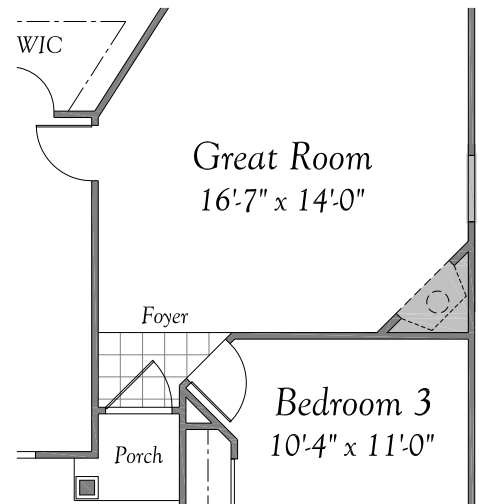
7 *Oval Tub & Shower Choice*



8 *Window Choice*



9 *Pantry Choice*

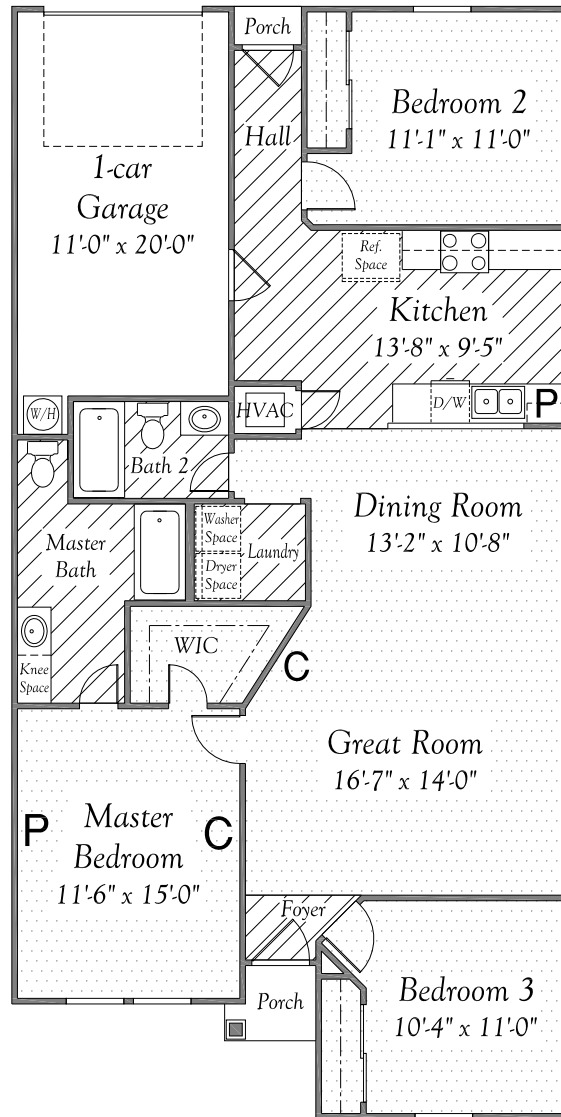


10 *Fireplace Choice*

In the interest of continual improvement, Vintage Homes LLC reserves the right to make changes without notice or obligation. Prices are subject to change until a sales contract is accepted by Vintage Homes, LLC. Illustrations and specifications are correct at the time of publication, and are not to create any warranty or contract rights. All dimensions are approximate. Details shown may vary depending on the elevation and lifestyle choices selected. Please consult your Vintage New Home Consultant for details. **Effective Date: 7/12/2011**

Answer Collection
1300 Series
PLAN 1351

FLOORING MATRIX



Floor Plan
Step Saver Kitchen

 CARPET

 VINYL

P = PHONE OUTLET (2)

C = CABLE OUTLET (2)

In the interest of continual improvement, Vintage Homes LLC reserves the right to make changes without notice or obligation. Prices are subject to change until a sales contract is accepted by Vintage Homes, LLC. Illustrations and specifications are correct at the time of publication, and are not to create any warranty or contract rights. All dimensions are approximate. Details shown may vary depending on the elevation and lifestyle choices selected. Please consult your Vintage New Home Consultant for details. **Effective Date: 7/12/2011**