

---

Answer Collection  
2300 Series  
Plan 2361

---



Elevation Aw



Elevation Bw



Elevation Cw

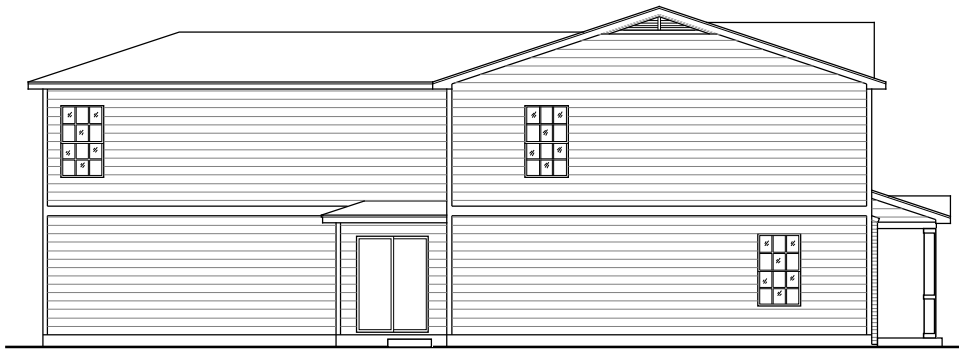
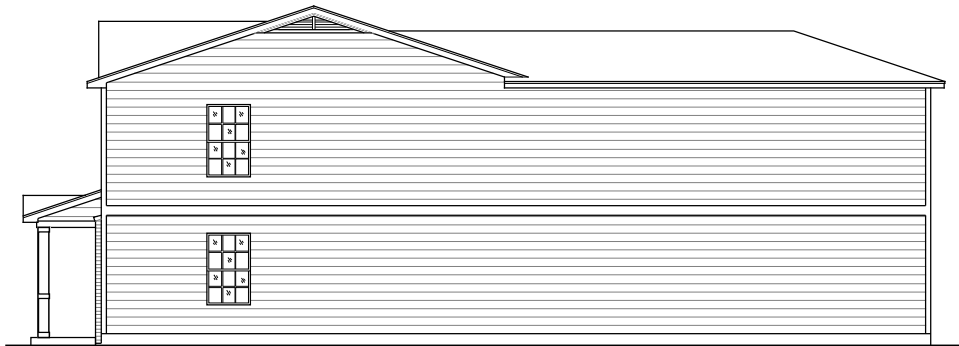
In the interest of continual improvement, Vintage Homes LLC reserves the right to make changes without notice or obligation. Prices are subject to change until a sales contract is accepted by Vintage Homes, LLC. Illustrations and specifications are correct at the time of publication, and are not to create any warranty or contract rights. All dimensions are approximate. Details shown may vary depending on the elevation and lifestyle choices selected. Please consult your Vintage New Home Consultant for details. **Effective Date: 8/5/2011**

# Answer Collection

## 2300 Series

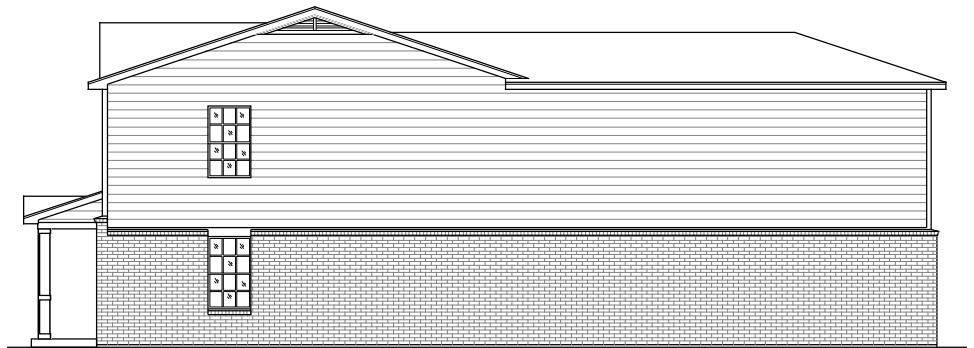
### Plan 2361

*Please choose the first floor configuration that best suits your family's lifestyle.*



Siding 3 Sides  
 Right, Left & Rear

Brick 3 Sides  
 1-Story Height Choice  
 Right, Left & Rear



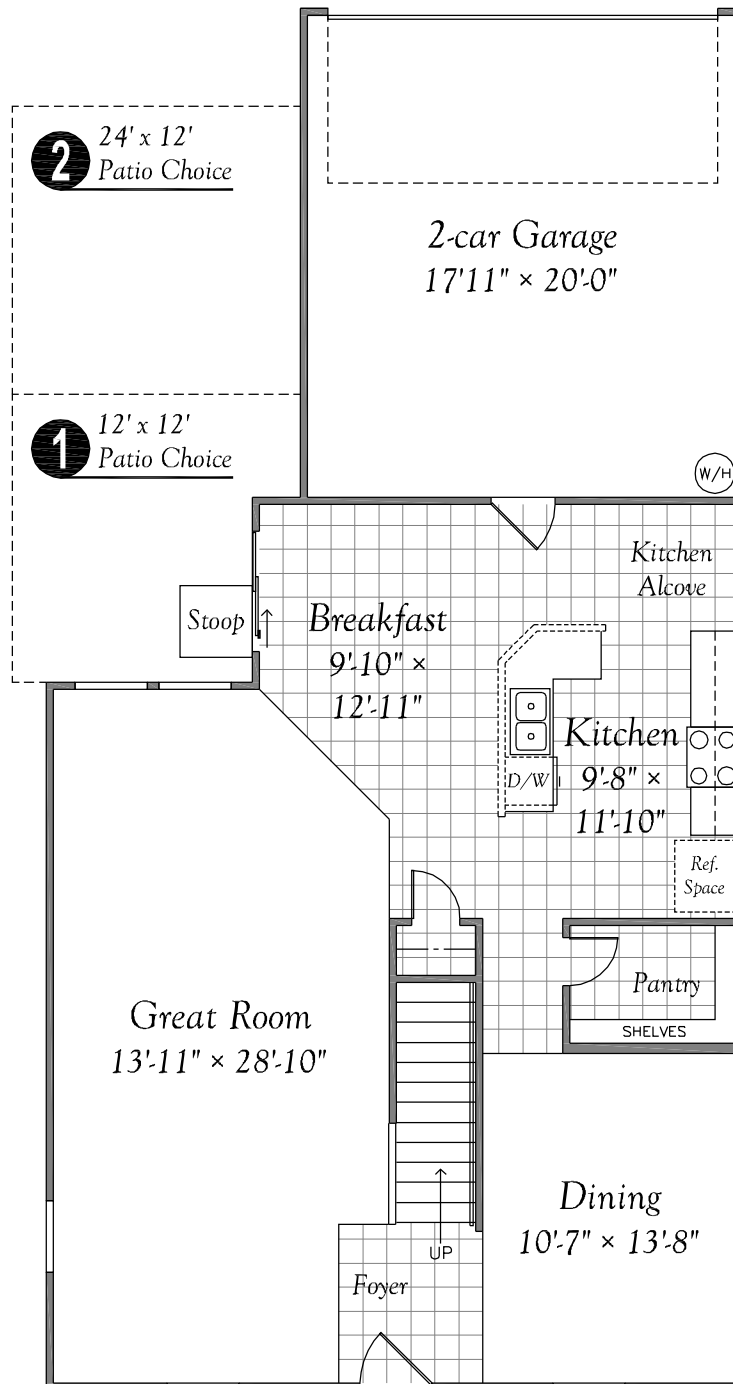
In the interest of continual improvement, Vintage Homes LLC reserves the right to make changes without notice or obligation. Prices are subject to change until a sales contract is accepted by Vintage Homes, LLC. Illustrations and specifications are correct at the time of publication, and are not to create any warranty or contract rights. All dimensions are approximate. Details shown may vary depending on the elevation and lifestyle choices selected. **Effective Date: 8/5/2011**

# Answer Collection

## 2300 Series

### Plan 2361

*Please choose the first floor configuration that best suits your family's lifestyle.*



*First Floor*  
*Step Saver Kitchen*

In the interest of continual improvement, Vintage Homes LLC reserves the right to make changes without notice or obligation. Prices are subject to change until a sales contract is accepted by Vintage Homes, LLC. Illustrations and specifications are correct at the time of publication, and are not to create any warranty or contract rights. All dimensions are approximate. Details shown may vary depending on the elevation and lifestyle choices selected. Please consult your Vintage New Home Consultant for details. **Effective Date: 8/5/2011**

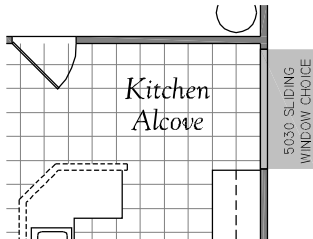
# Answer Collection

## 2300 Series

### Plan 2361

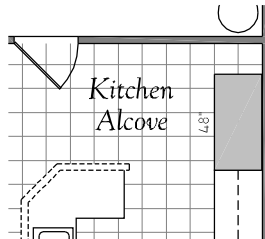
Please choose the first floor configuration that best suits your family's lifestyle.

### *Kitchen Alcove Choices*



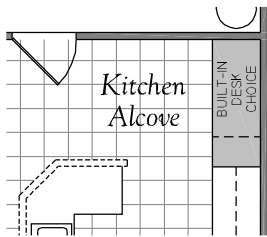
**3** *Kitchen Alcove Window Choice*

Unavailable with:  
 (5) Extd. Wall Cabinet  
 (7) Pantry



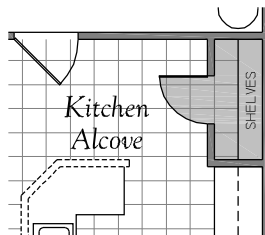
**6** *Kitchen Alcove Base Cabinet Choice*

Unavailable with:  
 (4) Built-in Desk  
 (7) Pantry



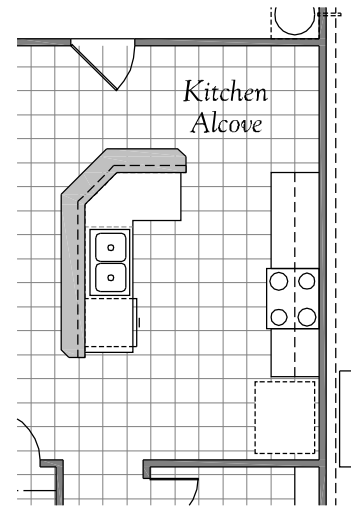
**4** *Kitchen Alcove Built-In Desk Choice*

Unavailable with:  
 (6) Extd. Base Cabinet  
 (7) Pantry

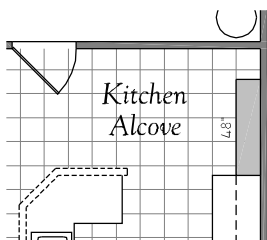


**7** *Kitchen Alcove Pantry Choice*

Unavailable with:  
 (3) Window  
 (4) Built-in Desk  
 (5) Extd. Wall Cabinet  
 (6) Extd. Base Cabinet

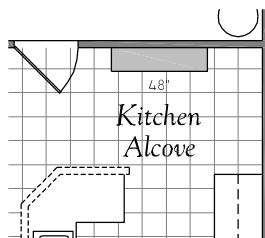


**9** *Kitchen Bartop Choice*



**5** *Kitchen Alcove Wall Cabinet Choice (Location A)*

Unavailable with:  
 (3) Window  
 (7) Pantry



**8** *Kitchen Alcove Wall Cabinet Choice (Location B)*

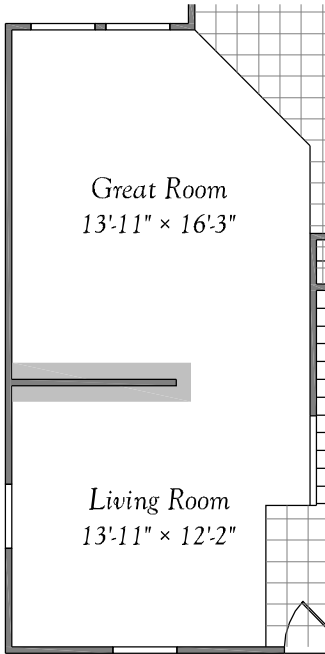
In the interest of continual improvement, Vintage Homes LLC reserves the right to make changes without notice or obligation. Prices are subject to change until a sales contract is accepted by Vintage Homes, LLC. Illustrations and specifications are correct at the time of publication, and are not to create any warranty or contract rights. All dimensions are approximate. Details shown may vary depending on the elevation and lifestyle choices selected. Please consult your Vintage New Home Consultant for details. **Effective Date: 8/5/2011**

# Answer Collection

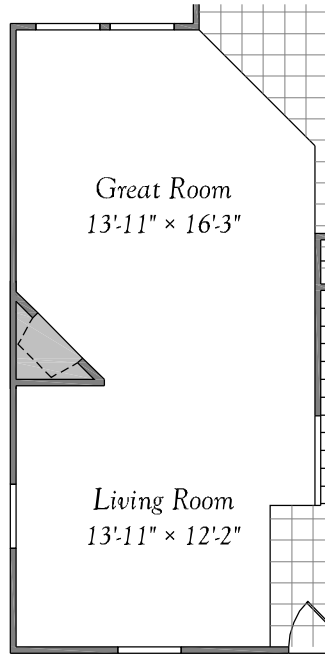
## 2300 Series

### Plan 2361

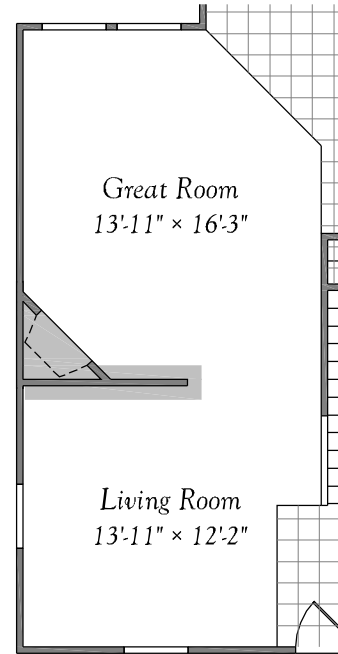
Please choose the first floor configuration that best suits your family's lifestyle.



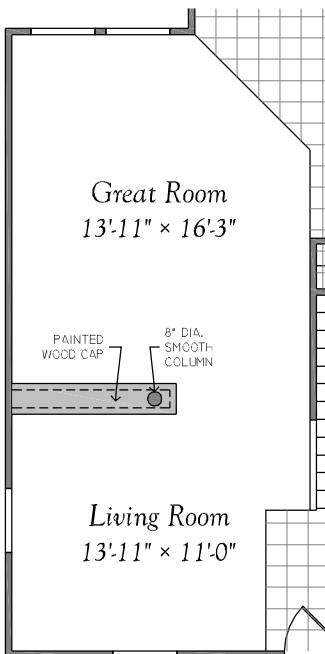
**10** *Divider Wall Choice*



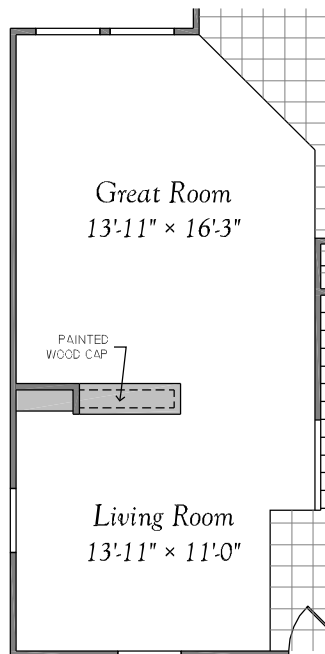
**11** *Fireplace Choice - Great Room*



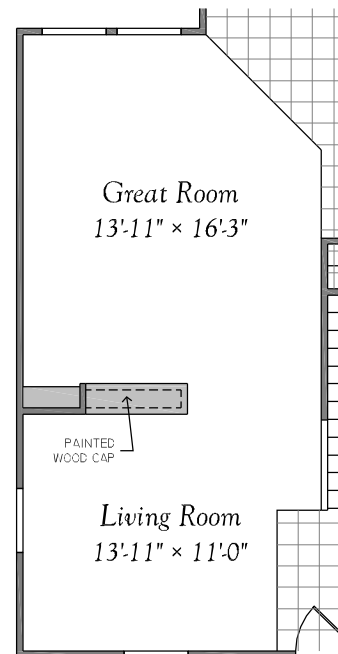
**12** *Fireplace Choice - Great Room with Divider Wall*



**13** *Low Wall Choice W-2*



**14** *Low Wall Choice W-3 (Location A)*



**15** *Low Wall Choice W-3 (Location B)*

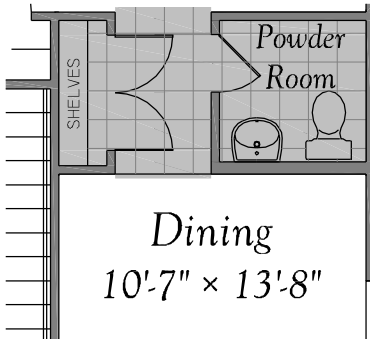
In the interest of continual improvement, Vintage Homes LLC reserves the right to make changes without notice or obligation. Prices are subject to change until a sales contract is accepted by Vintage Homes, LLC. Illustrations and specifications are correct at the time of publication, and are not to create any warranty or contract rights. All dimensions are approximate. Details shown may vary depending on the elevation and lifestyle choices selected. Please consult your Vintage New Home Consultant for details. **Effective Date: 8/5/2011**

# Answer Collection

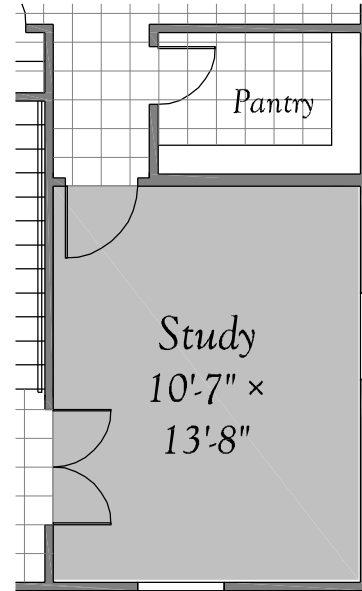
## 2300 Series

### Plan 2361

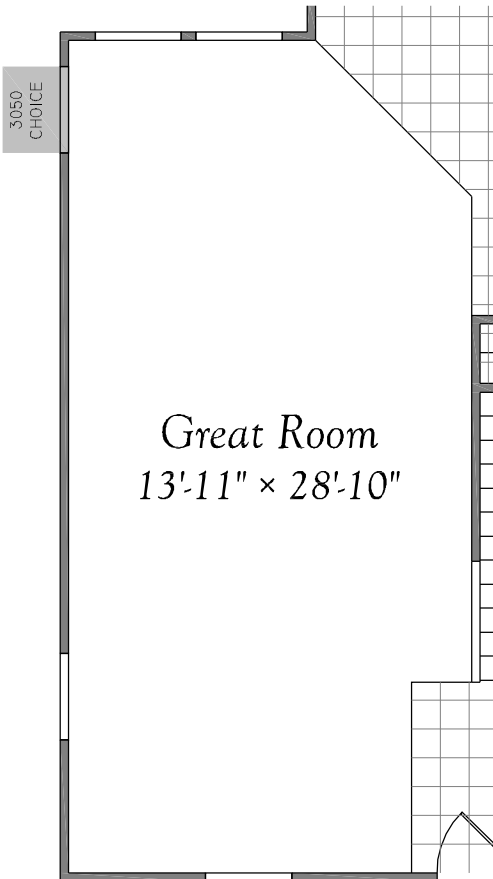
*Please choose the first floor configuration that best suits your family's lifestyle.*



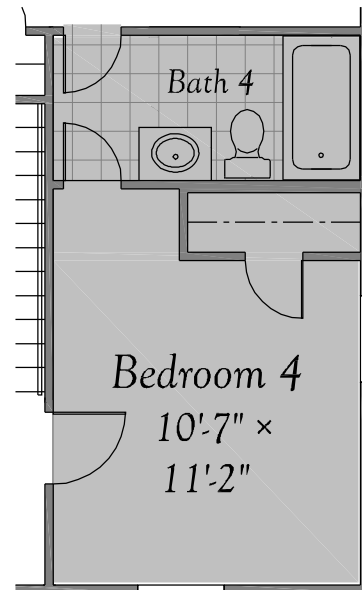
**16** *Powder Room Choice*



**18** *Study Choice*



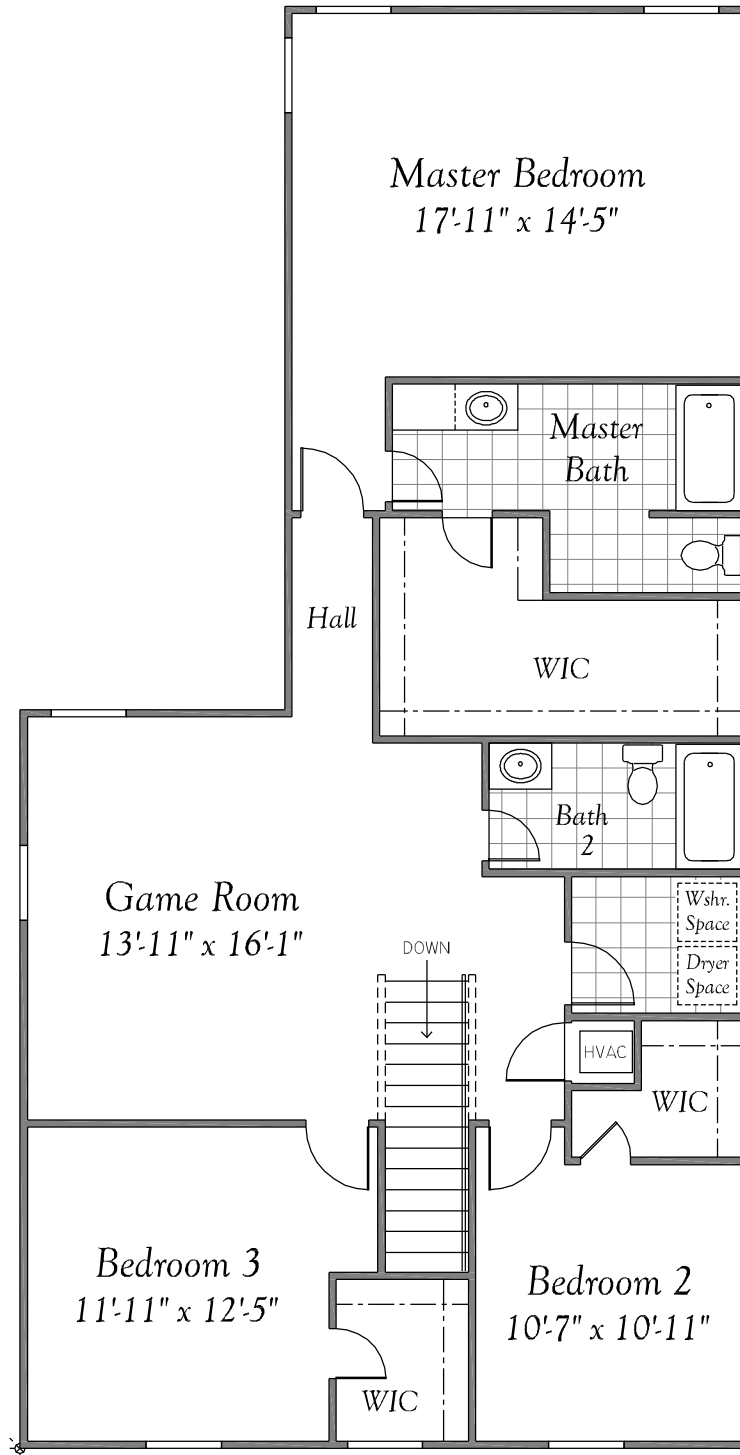
**17** *Great Room Window Choice*



**19** *Bedroom 4 with Bath 4 Choice*

In the interest of continual improvement, Vintage Homes LLC reserves the right to make changes without notice or obligation. Prices are subject to change until a sales contract is accepted by Vintage Homes, LLC. Illustrations and specifications are correct at the time of publication, and are not to create any warranty or contract rights. All dimensions are approximate. Details shown may vary depending on the elevation and lifestyle choices selected. Please consult your Vintage New Home Consultant for details. **Effective Date: 8/5/2011**

**Answer Collection**  
**2300 Series**  
**Plan 2361**

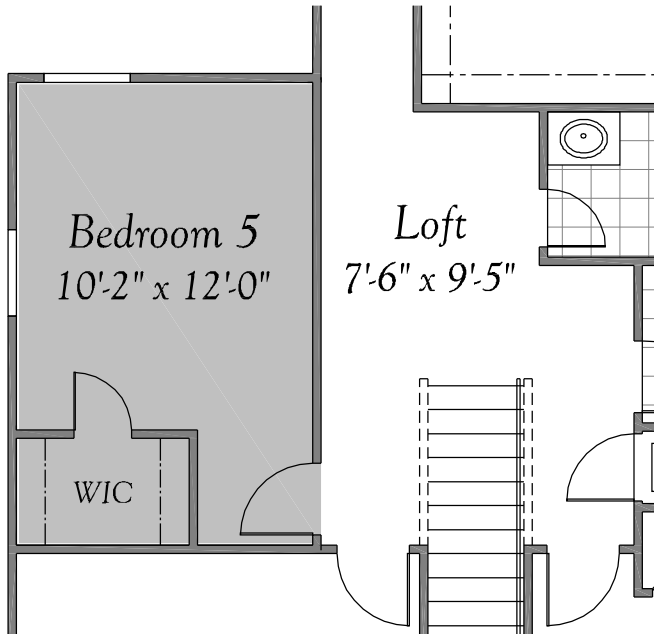


*Second Floor*

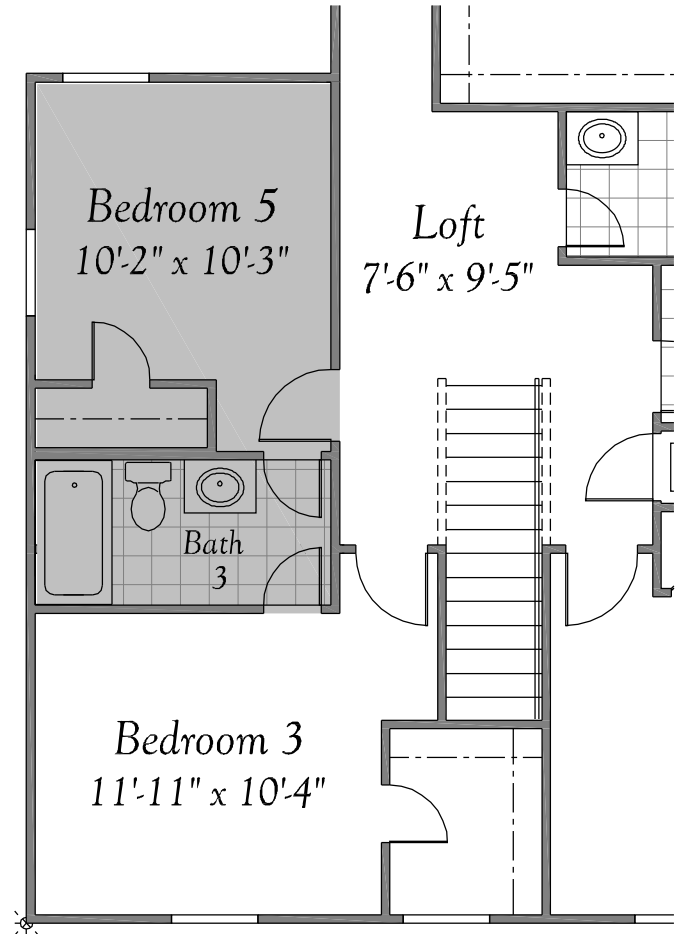
In the interest of continual improvement, Vintage Homes LLC reserves the right to make changes without notice or obligation. Prices are subject to change until a sales contract is accepted by Vintage Homes, LLC. Illustrations and specifications are correct at the time of publication, and are not to create any warranty or contract rights. All dimensions are approximate. Details shown may vary depending on the elevation and lifestyle choices selected. Please consult your Vintage New Home Consultant for details. **Effective Date: 8/5/2011**

**Answer Collection**  
**2300 Series**  
**Plan 2361**

*Please choose the second floor configuration that best suits your family's lifestyle.*



**20** *Bedroom 5  
Choice*



**22** *Bedroom 5 with  
Bath 3 Choice*



**21** *Fireplace Choice -  
Game Room*

In the interest of continual improvement, Vintage Homes LLC reserves the right to make changes without notice or obligation. Prices are subject to change until a sales contract is accepted by Vintage Homes, LLC. Illustrations and specifications are correct at the time of publication, and are not to create any warranty or contract rights. All dimensions are approximate. Details shown may vary depending on the elevation and lifestyle choices selected. Please consult your Vintage New Home Consultant for details. **Effective Date: 8/5/2011**

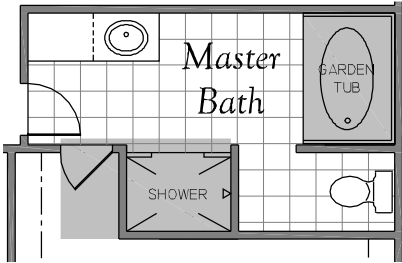
# Answer Collection

## 2300 Series

### Plan 2361

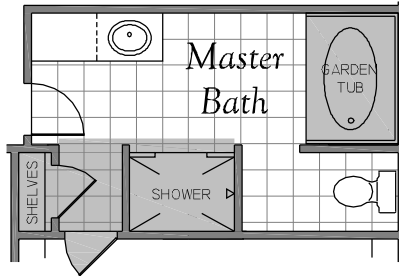
Please choose the second floor configuration that best suits your family's lifestyle.

### Master Bath Choices



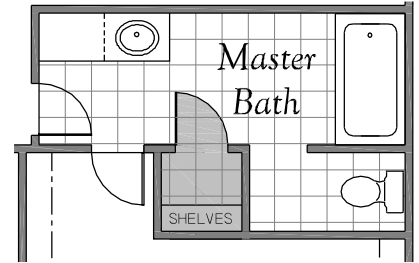
**23** Garden Tub with Separate Shower Choice

Unavailable with:  
(25) Master Linen



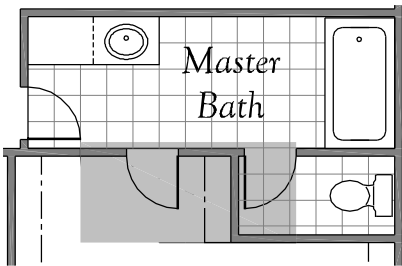
**24** Garden Tub w/Separate Shower & Linen Choice

Unavailable with:  
(25) Master Linen

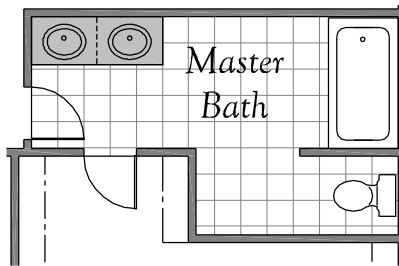


**25** Linen Choice

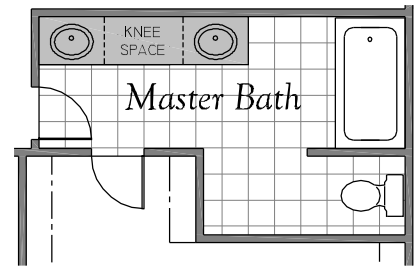
Unavailable with:  
(23) Garden Tub with Shower  
(24) Garden Tub, Shower, Linen



**26** Enclosed Water Closet Choice

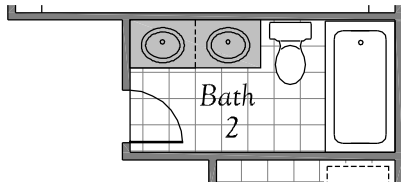


**27** Double Vanity Choice

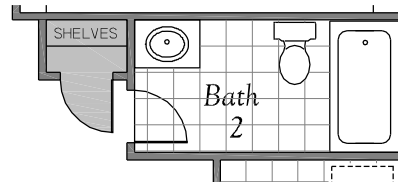


**28** Extended Double Vanity Choice

### Bath 2 Choices



**29** Double Vanity Choice

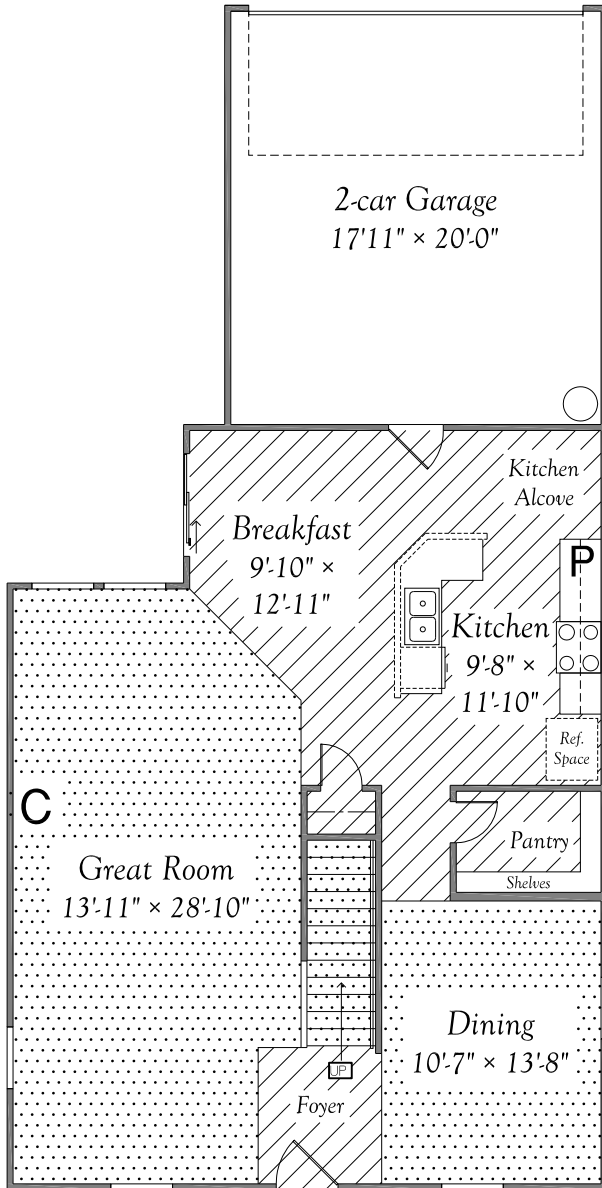


**30** Linen Choice

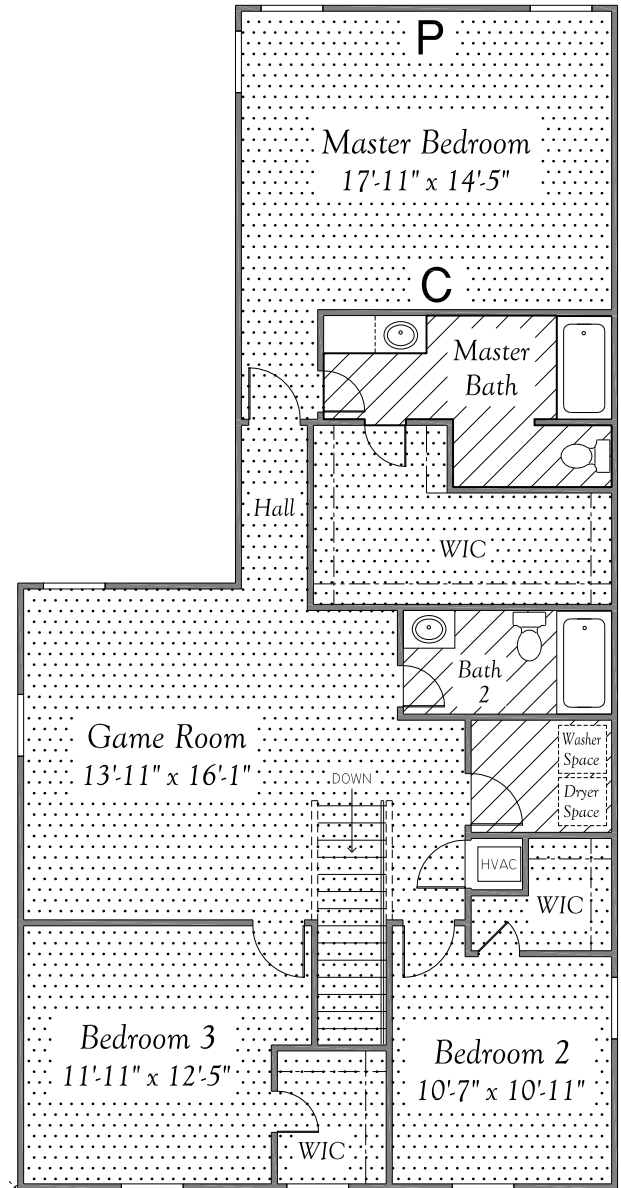
In the interest of continual improvement, Vintage Homes LLC reserves the right to make changes without notice or obligation. Prices are subject to change until a sales contract is accepted by Vintage Homes, LLC. Illustrations and specifications are correct at the time of publication, and are not to create any warranty or contract rights. All dimensions are approximate. Details shown may vary depending on the elevation and lifestyle choices selected. Please consult your Vintage New Home Consultant for details. **Effective Date: 8/5/2011**

Answer Collection  
2300 Series  
PLAN 2361

FLOORING MATRIX



*First Floor*  
*Step Saver Kitchen*



*Second Floor*



CARPET



VINYL

**P** = PHONE OUTLET (2)

**C** = CABLE OUTLET (2)

In the interest of continual improvement, Vintage Homes LLC reserves the right to make changes without notice or obligation. Prices are subject to change until a sales contract is accepted by Vintage Homes, LLC. Illustrations and specifications are correct at the time of publication, and are not to create any warranty or contract rights. All dimensions are approximate. Details shown may vary depending on the elevation and lifestyle choices selected. Please consult your Vintage New Home Consultant for details. **Effective Date: 8/5/2011**